

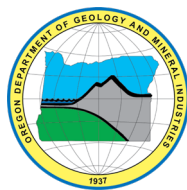
State of Oregon
Oregon Department of Geology and Mineral Industries
Ruarri Day-Stirrat, State Geologist

OPEN-FILE REPORT O-25-01

EARTHQUAKE AND TSUNAMI IMPACT ANALYSIS FOR THE OREGON COAST

Clatsop County Community Profiles

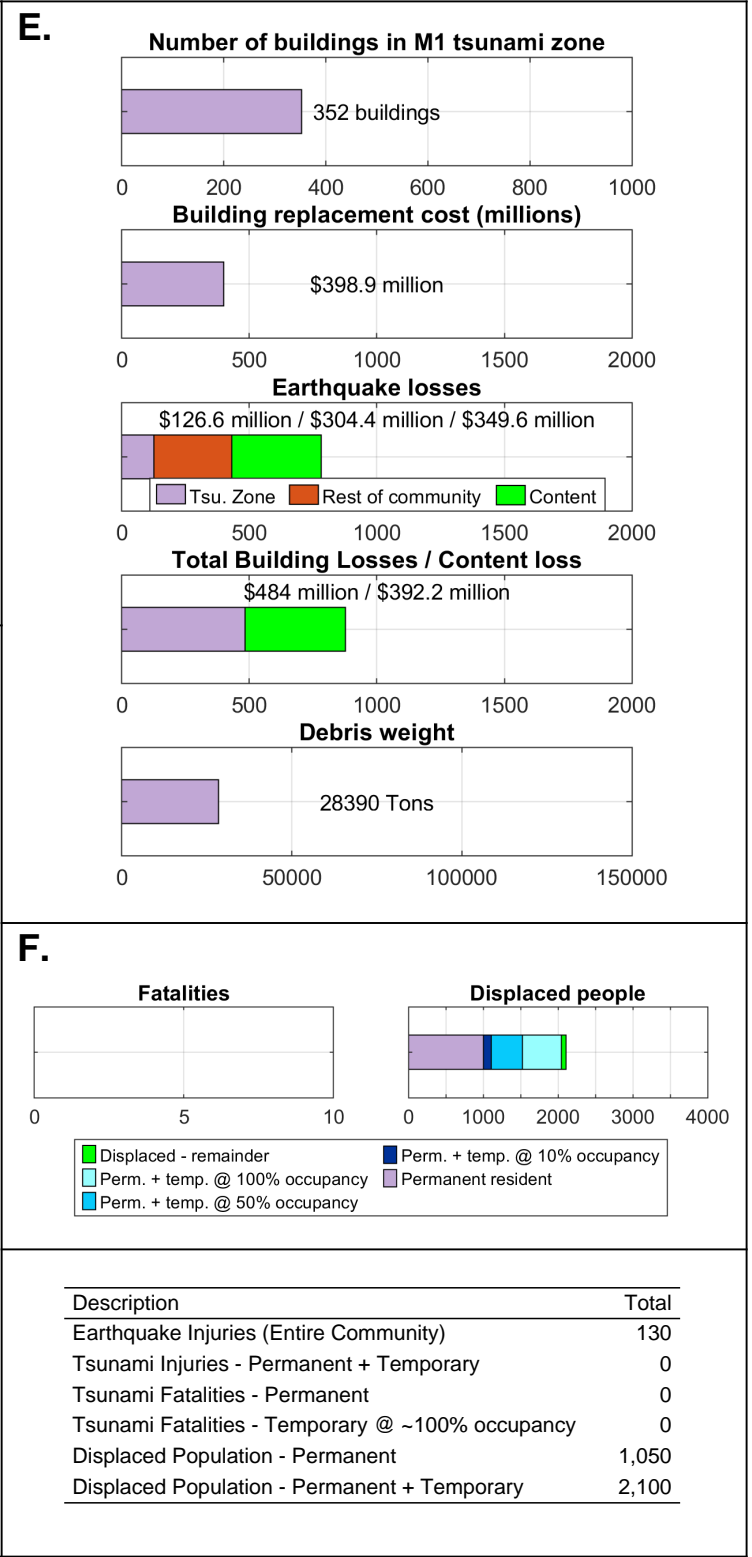
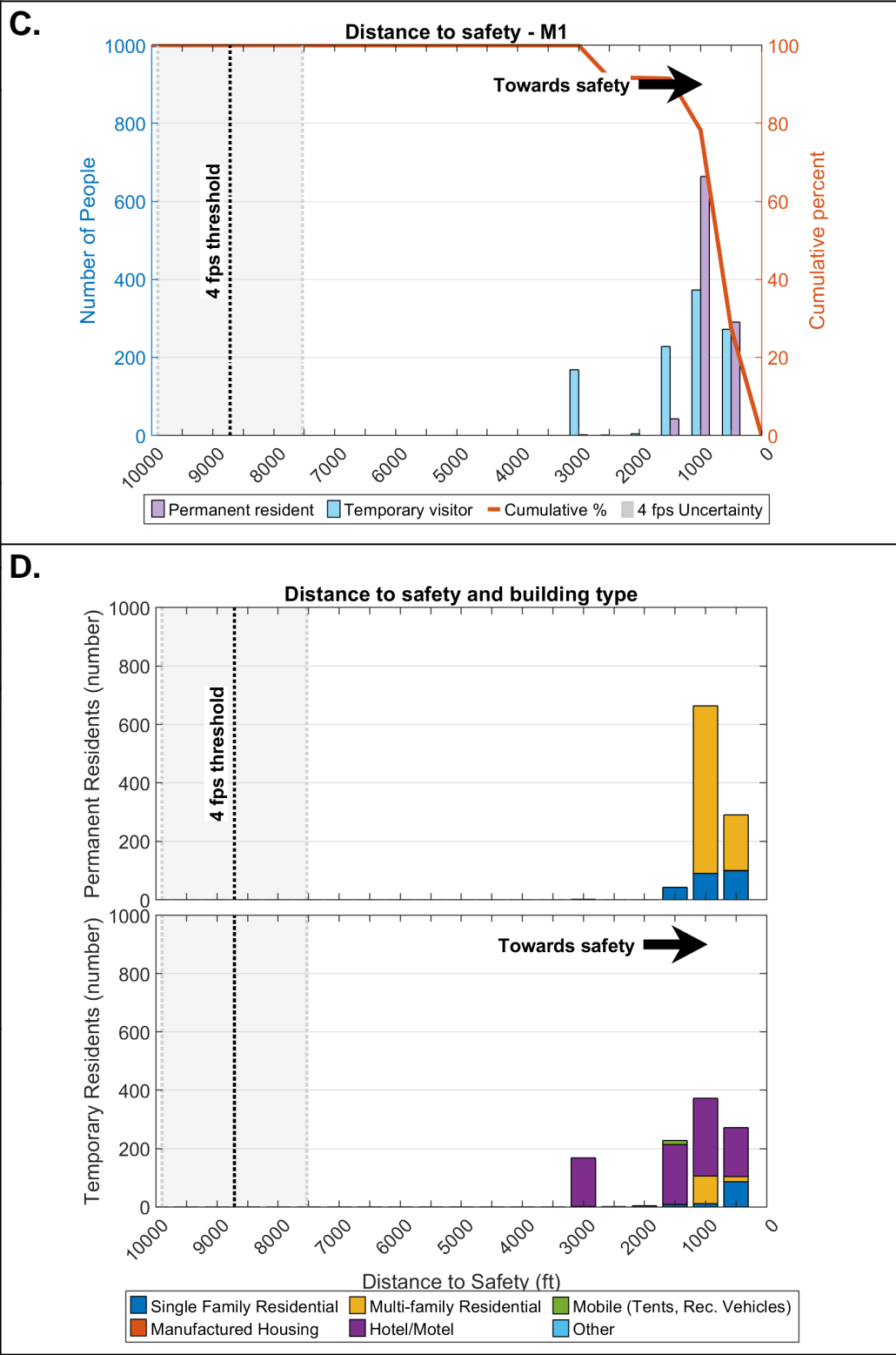
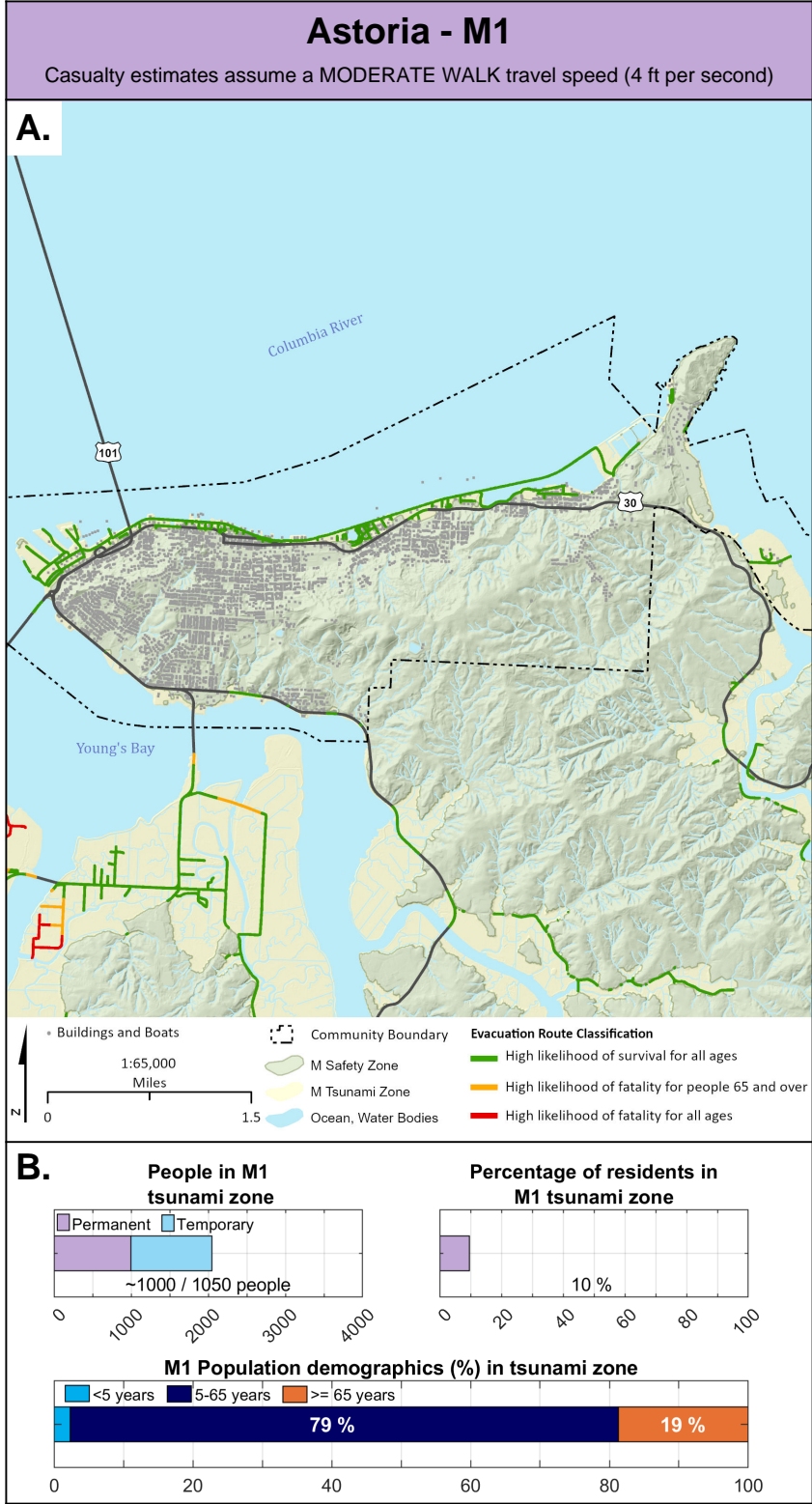
By Jonathan C. Allan¹ and Fletcher E. O'Brien²

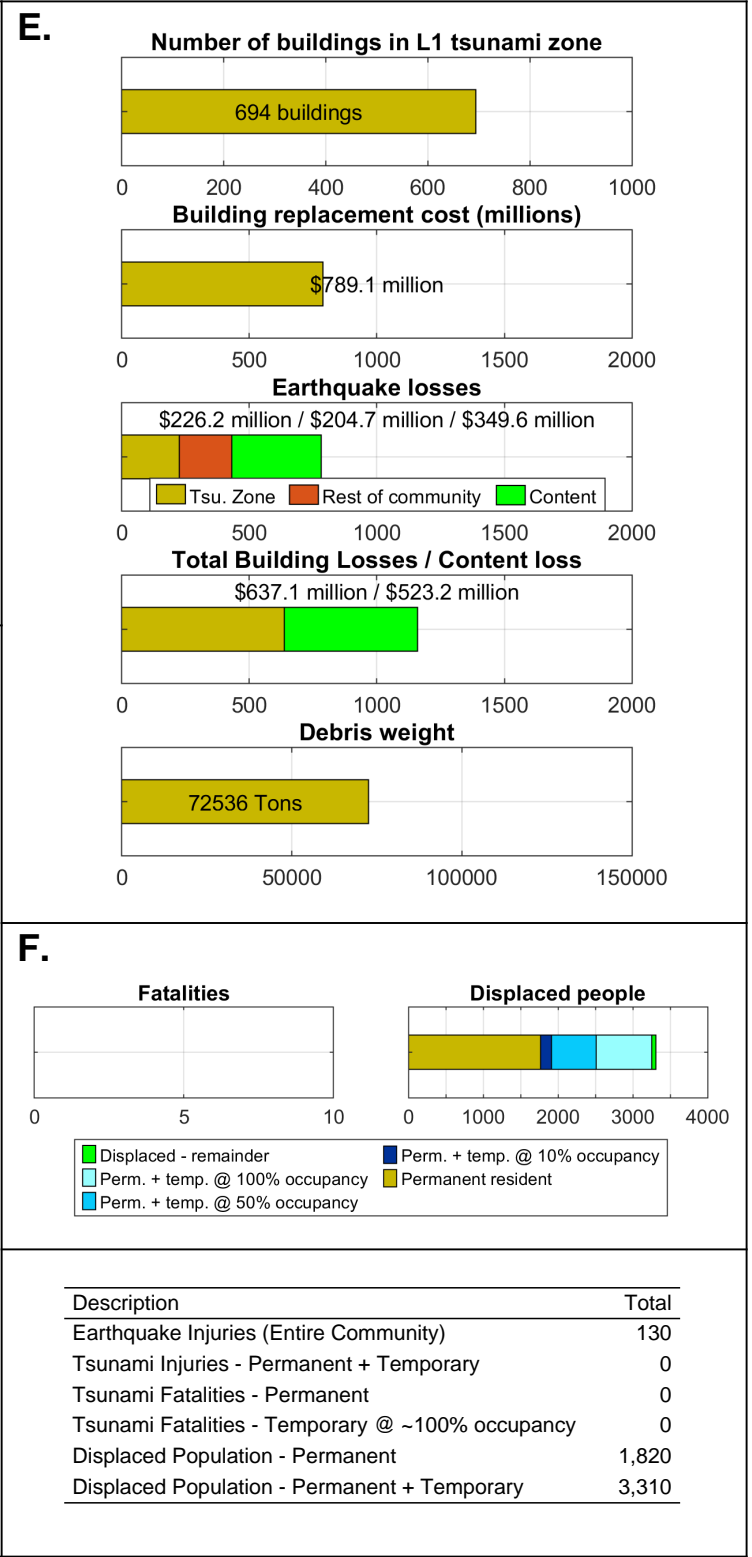
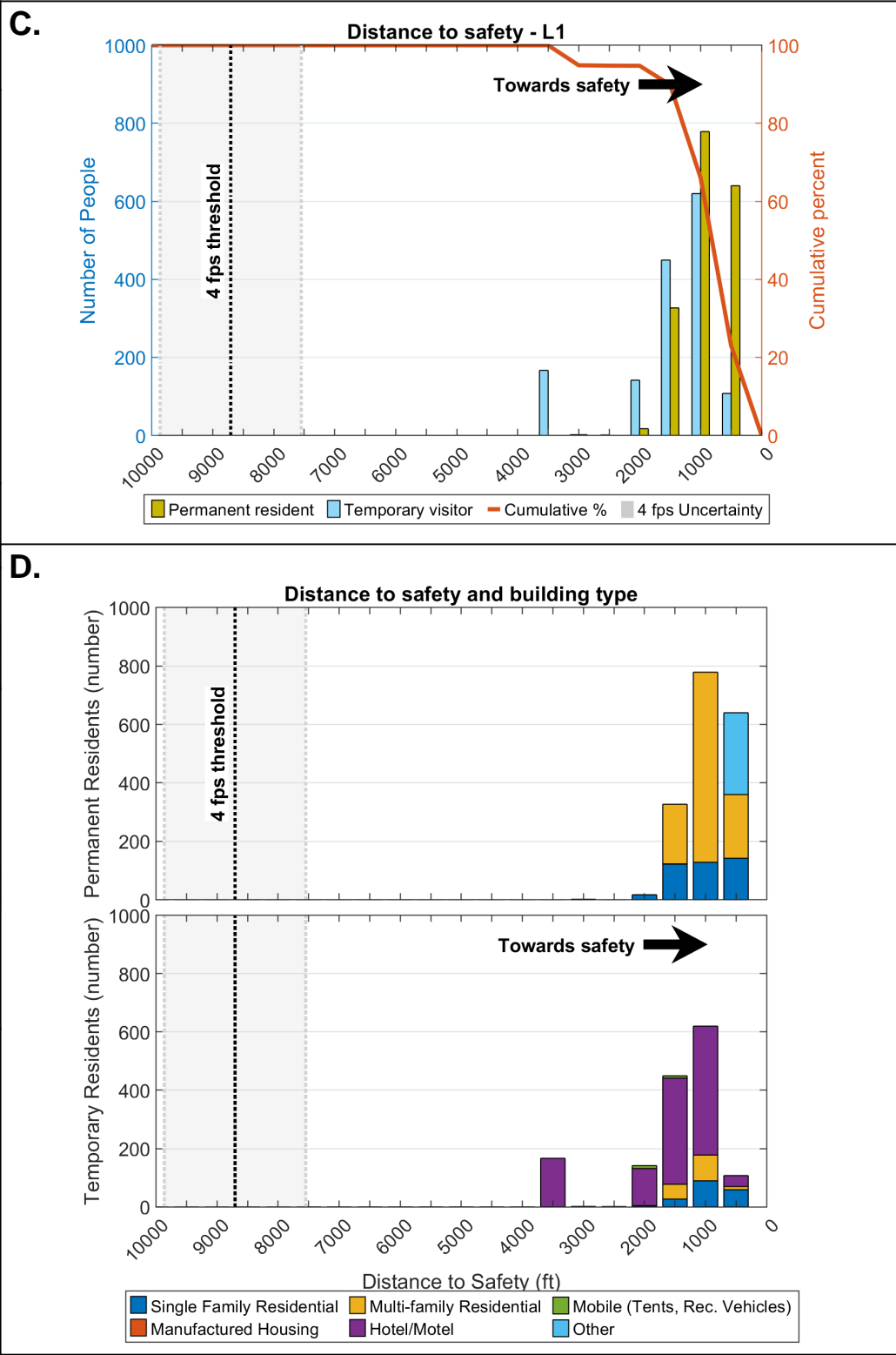
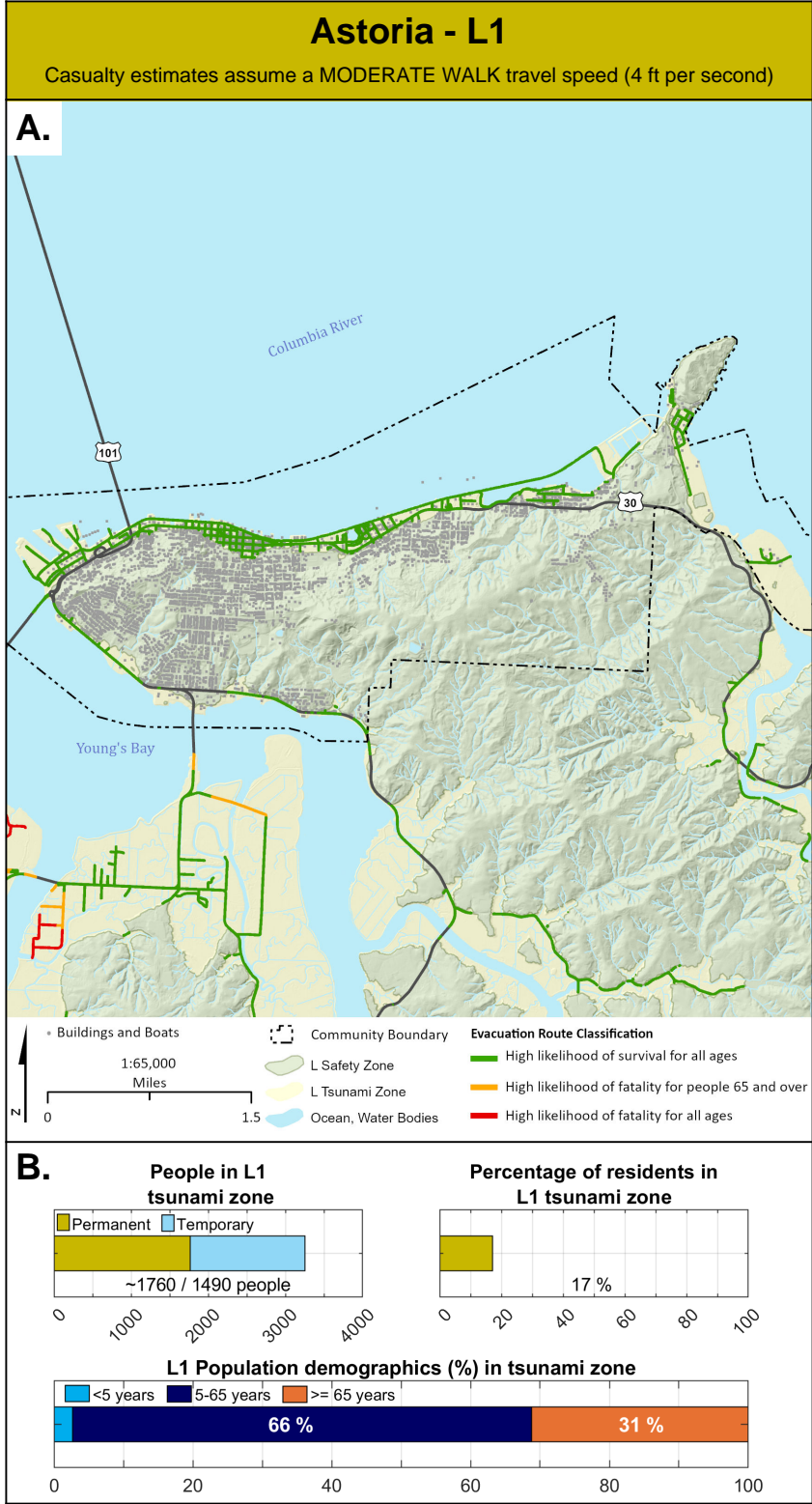


2025

¹Oregon Department of Geology and Mineral Industries, Coastal Field Office, P.O. Box 1033, Newport, OR 97365

²Oregon Department of Geology and Mineral Industries, 800 NE Oregon Street, Suite 965, Portland, OR 97232

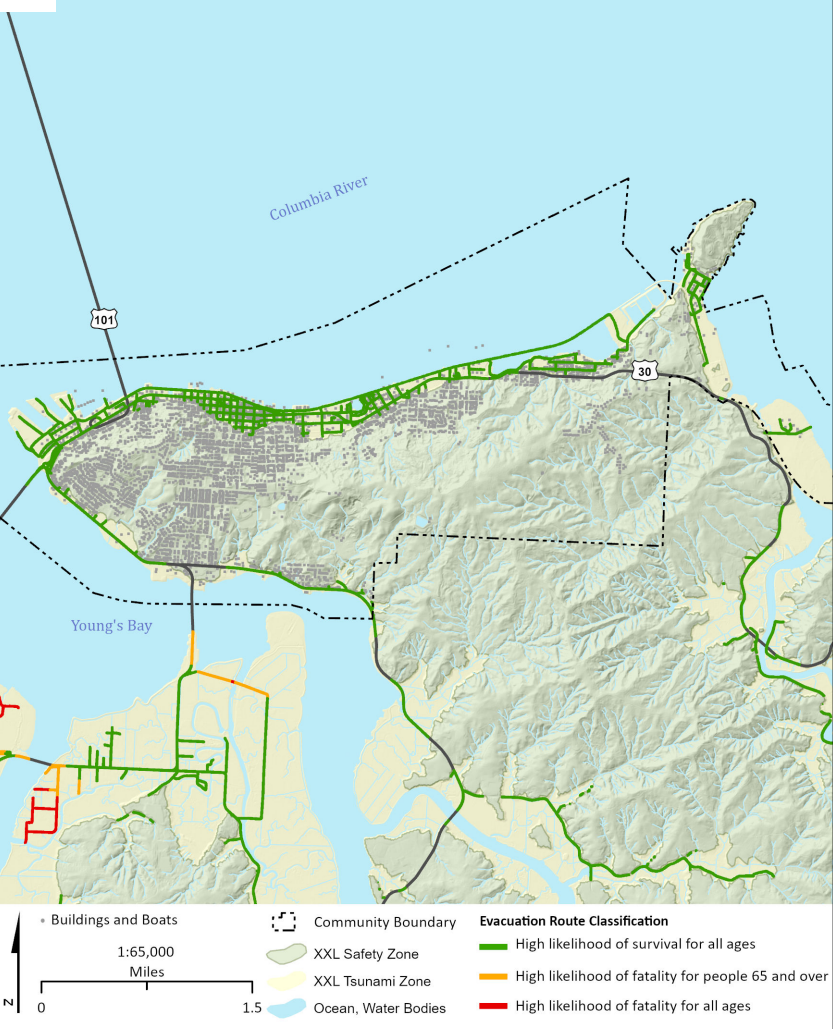




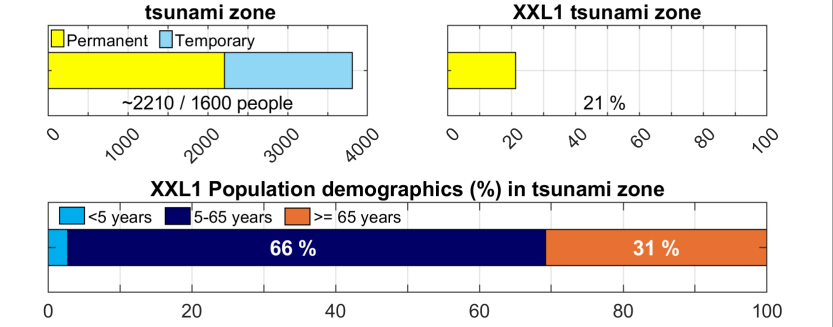
Astoria - XXL1

Casualty estimates assume a MODERATE WALK travel speed (4 ft per second)

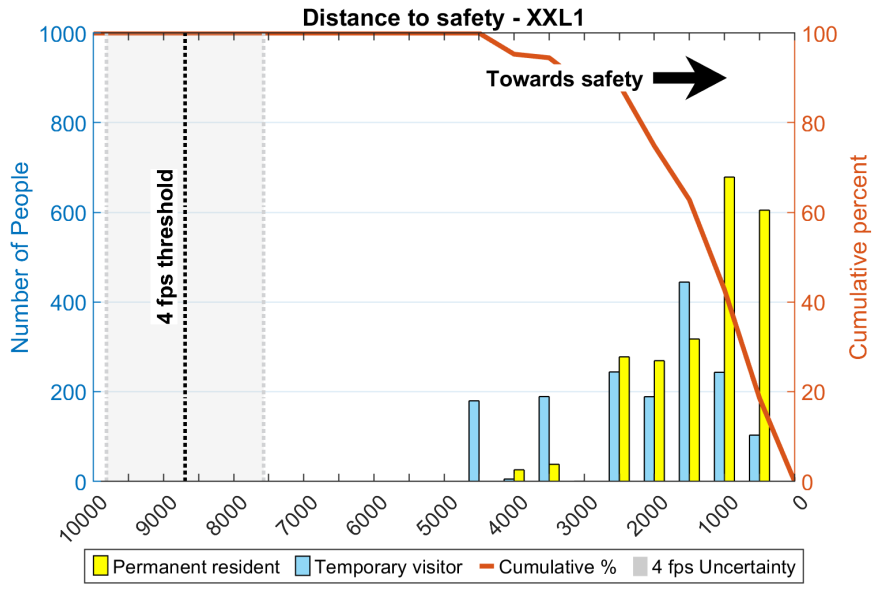
A.



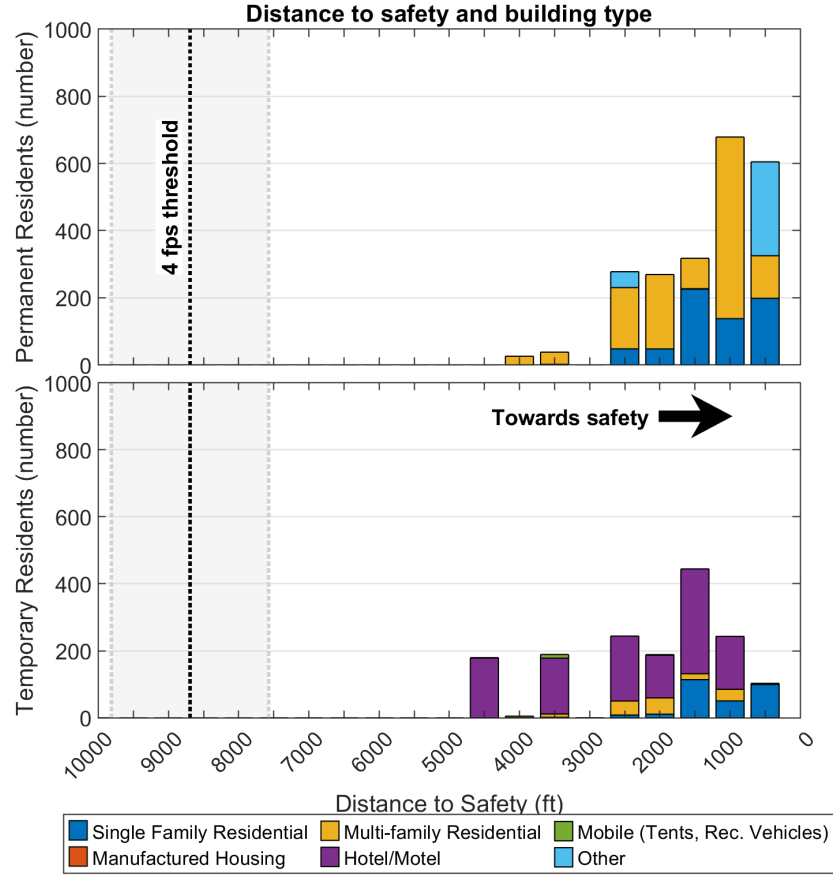
B.



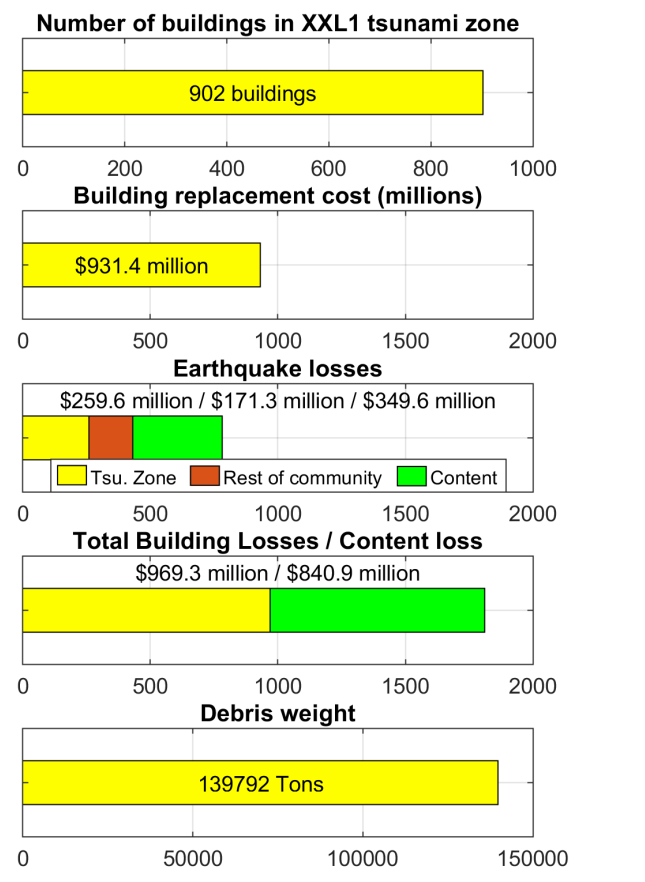
C.



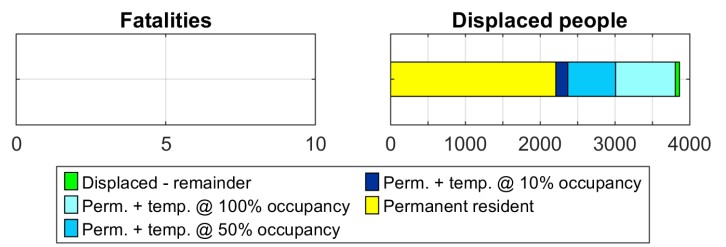
D.



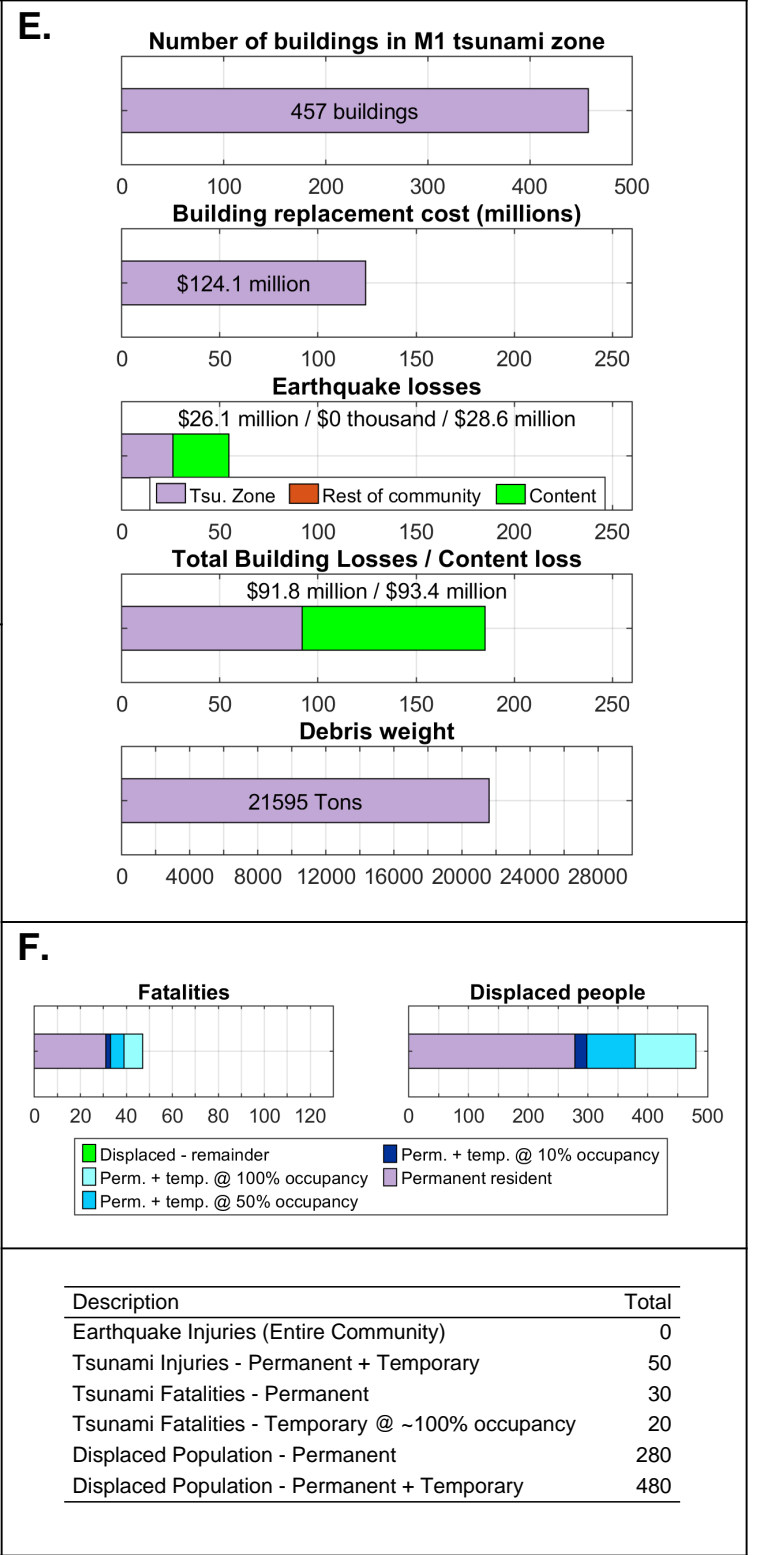
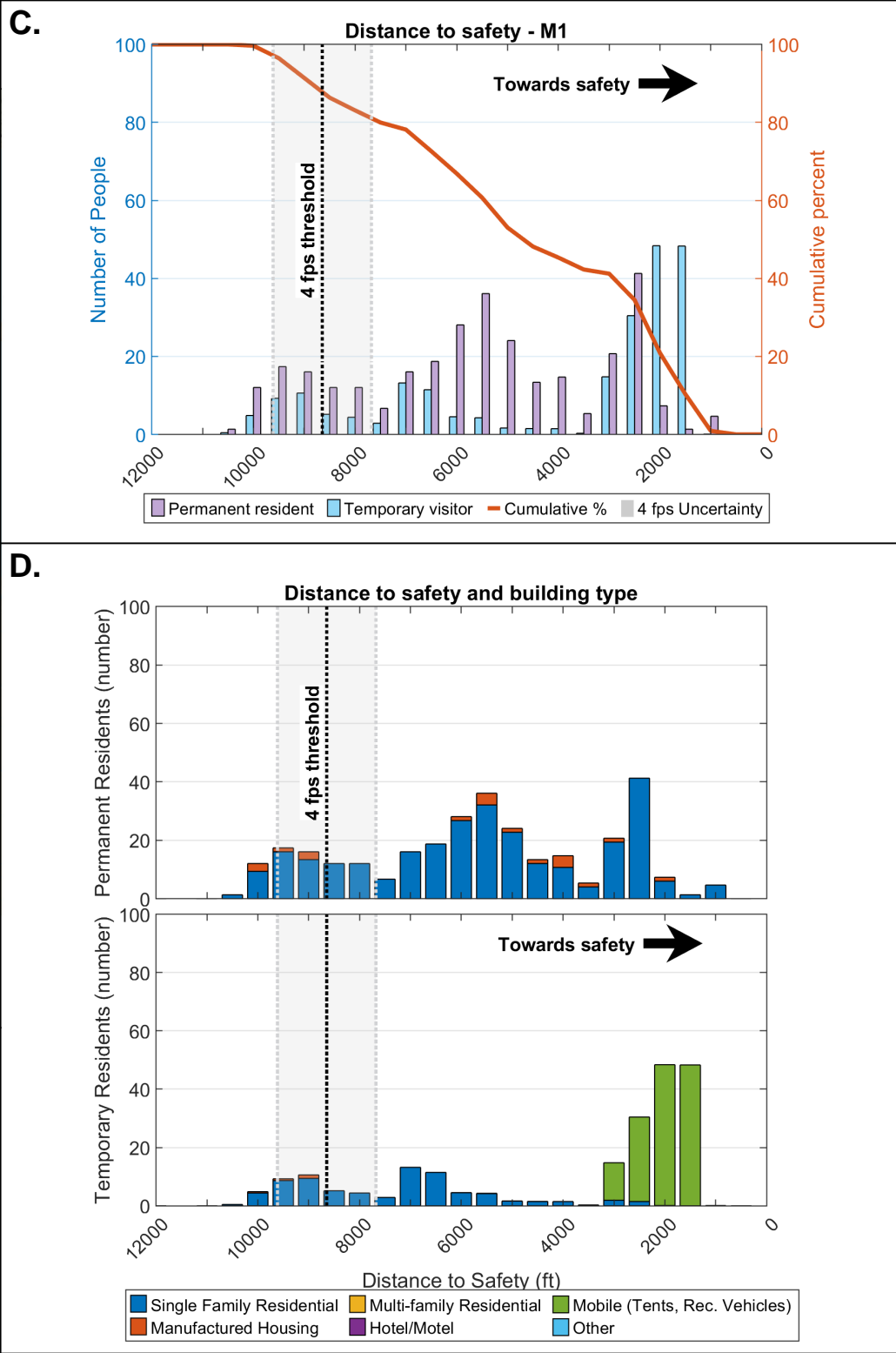
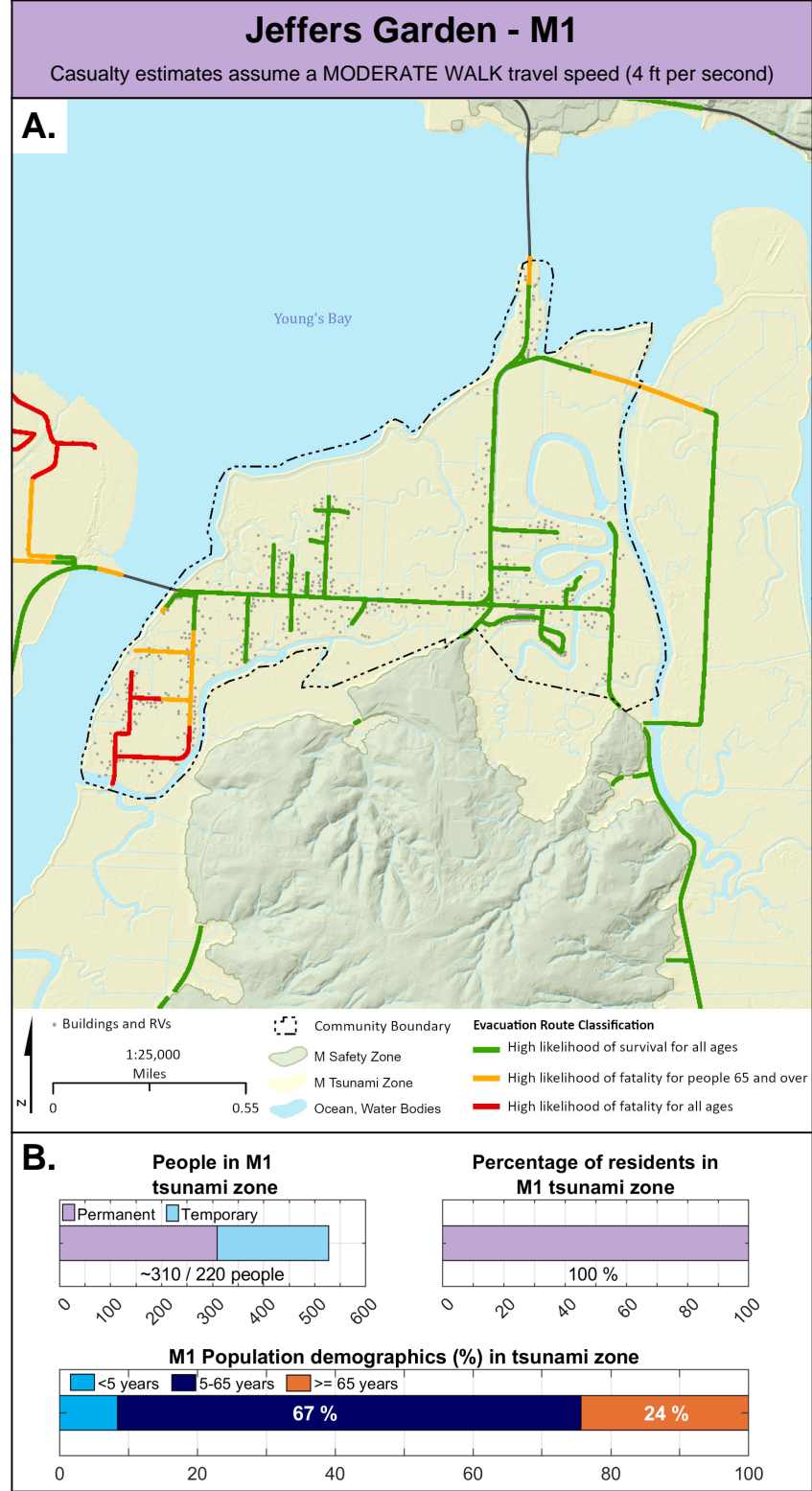
E.

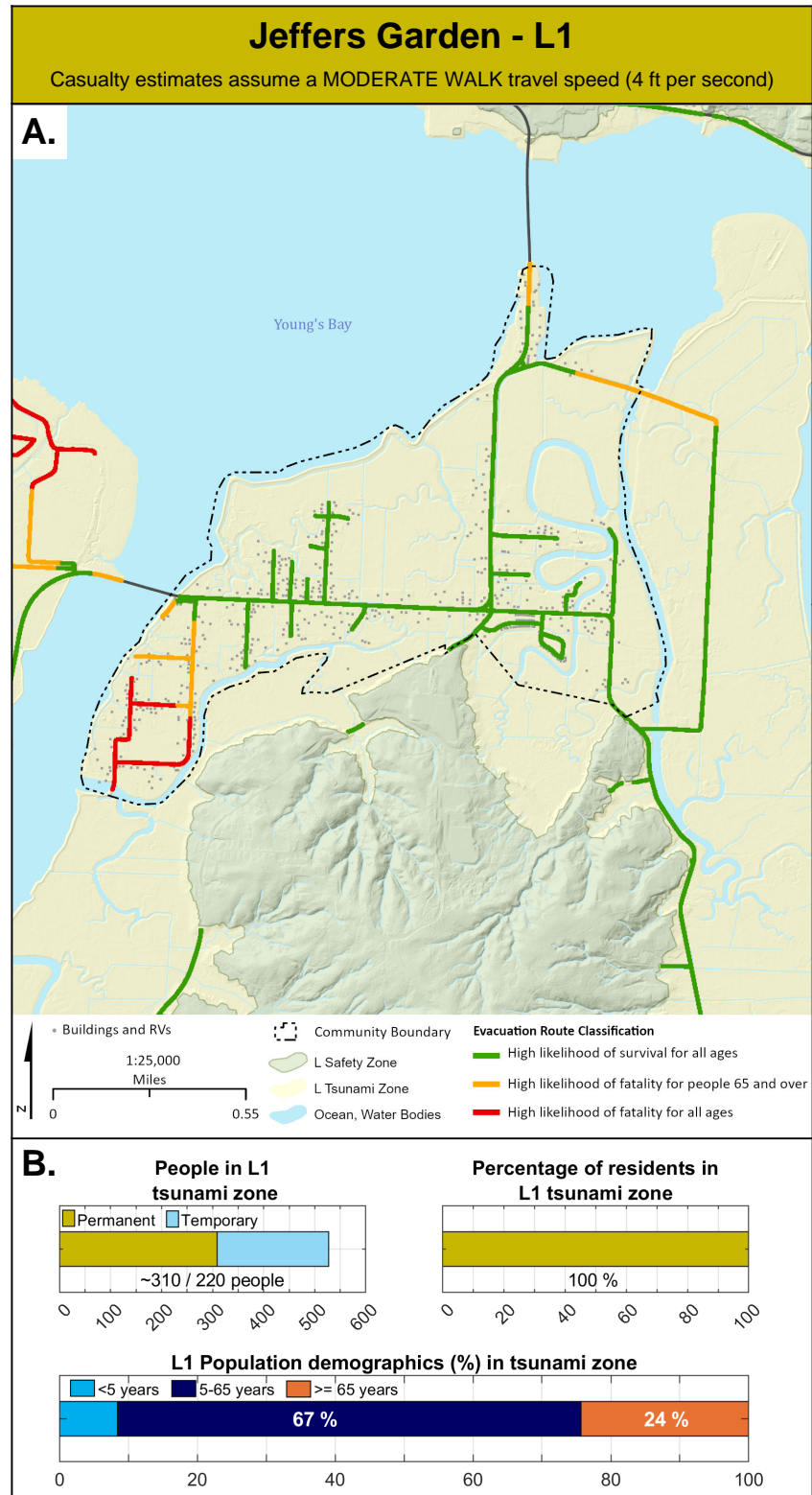


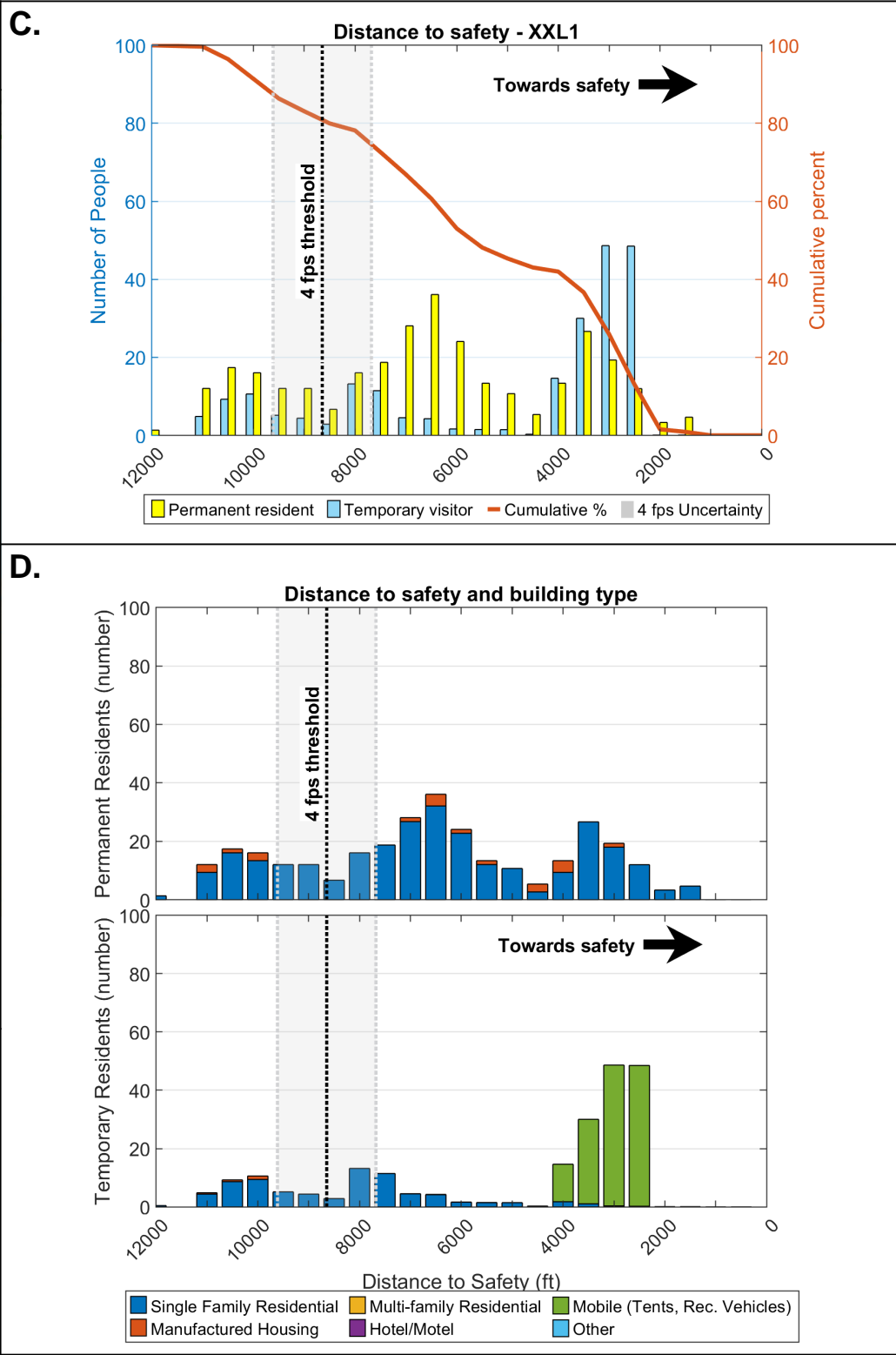
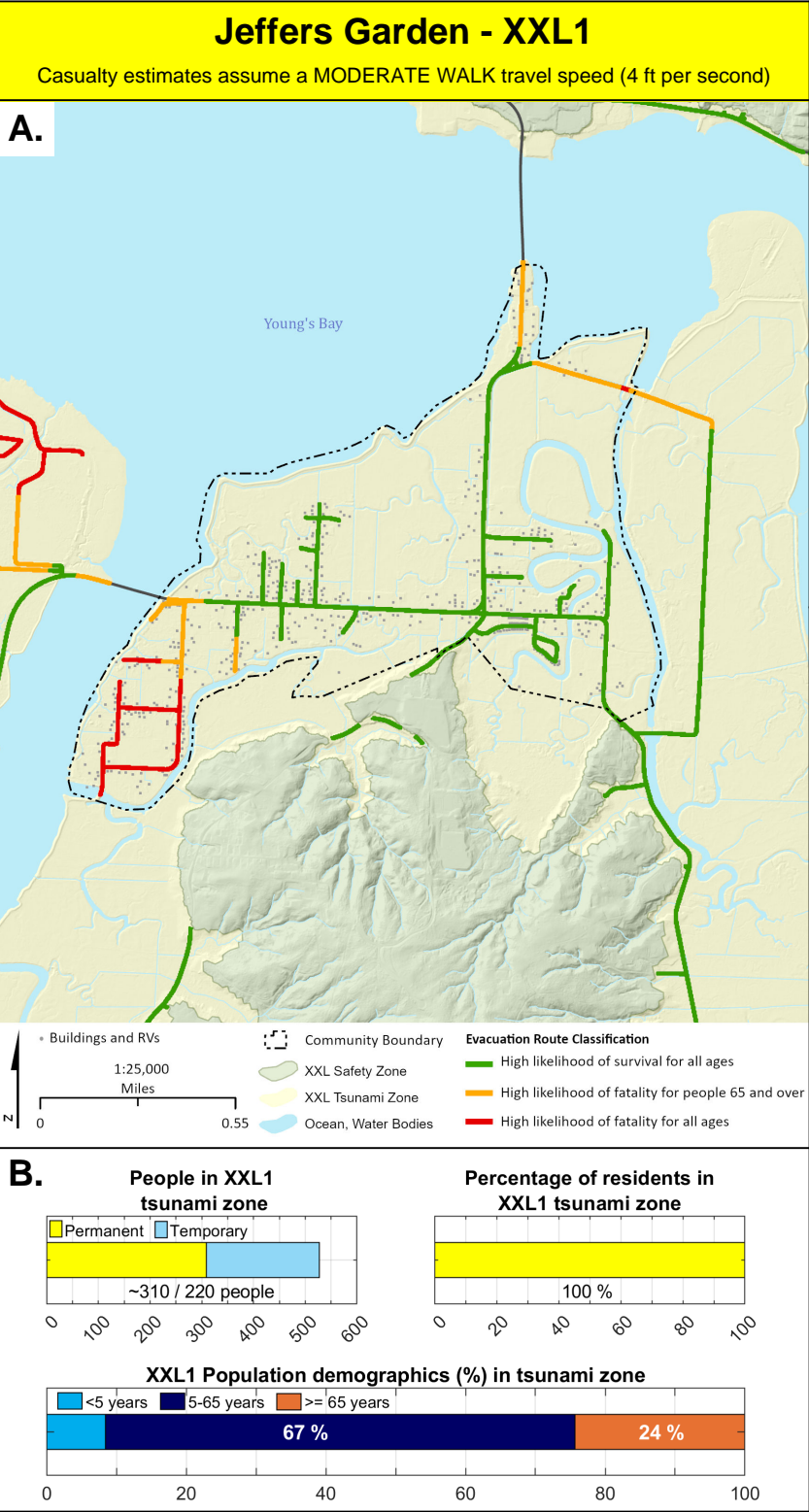
F.



Description	Total
Earthquake Injuries (Entire Community)	130
Tsunami Injuries - Permanent + Temporary	0
Tsunami Fatalities - Permanent	0
Tsunami Fatalities - Temporary @ ~100% occupancy	0
Displaced Population - Permanent	2,270
Displaced Population - Permanent + Temporary	3,870



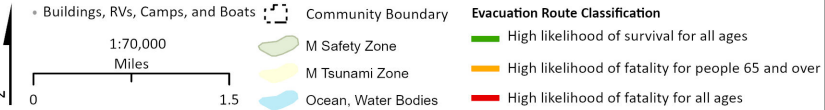
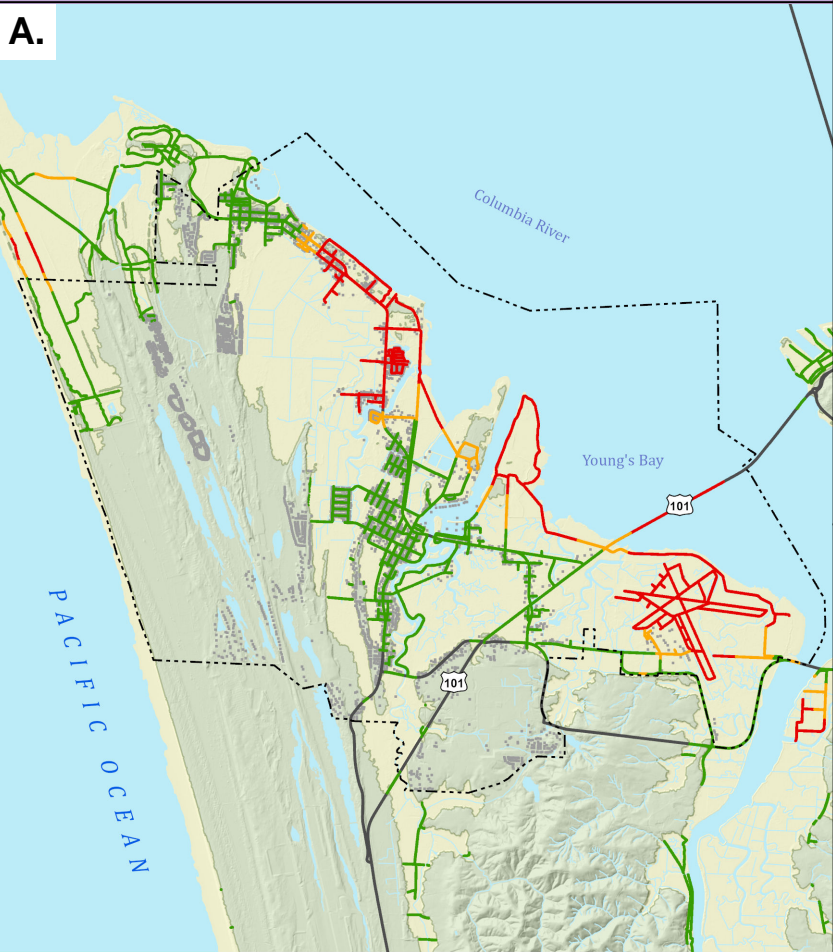




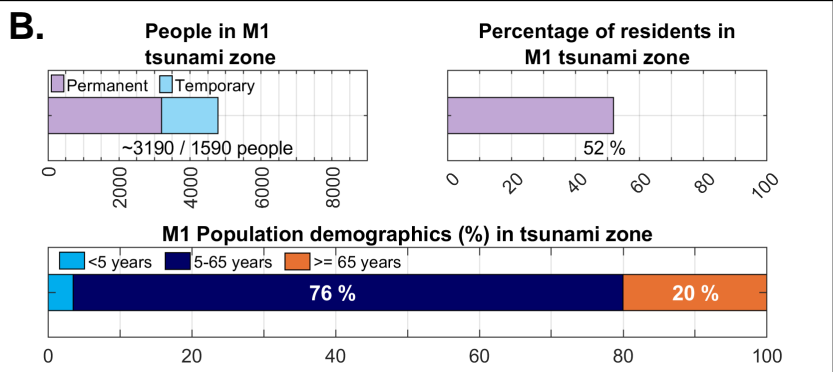
Warrenton - M1

Casualty estimates assume a MODERATE WALK travel speed (4 ft per second)

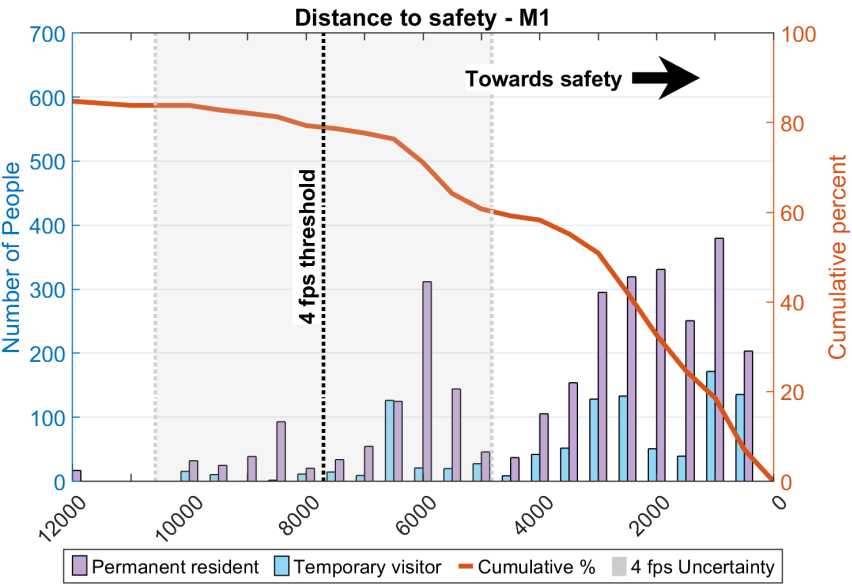
A.



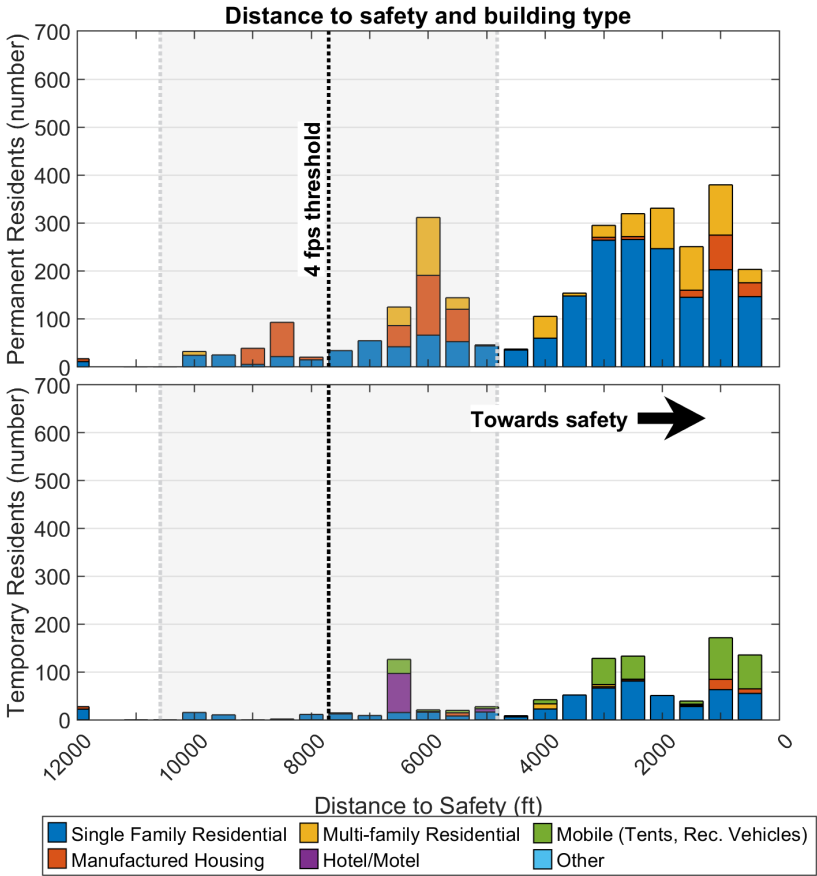
B.



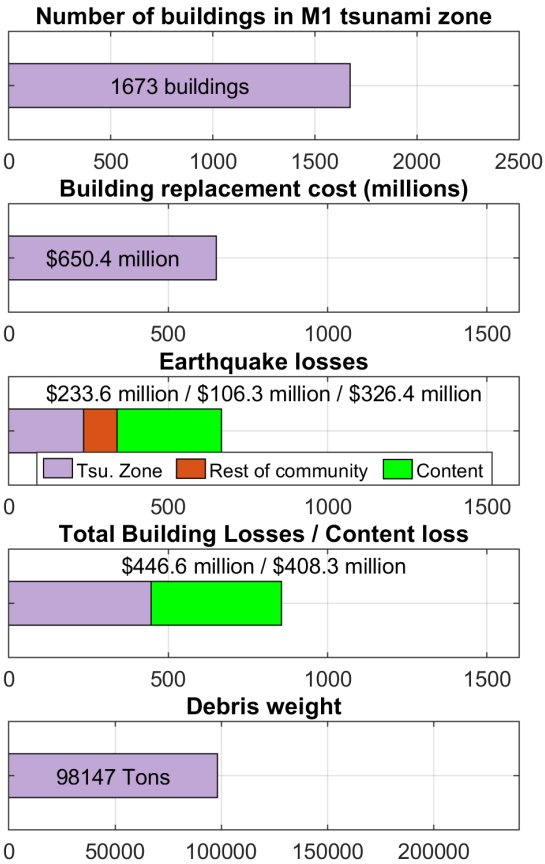
C.



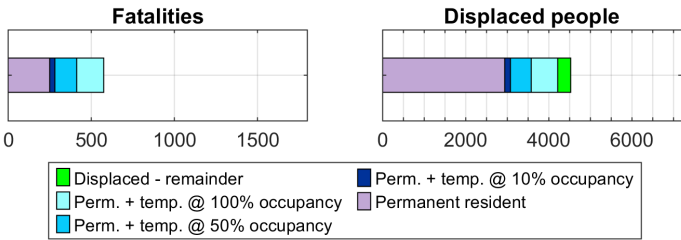
D.



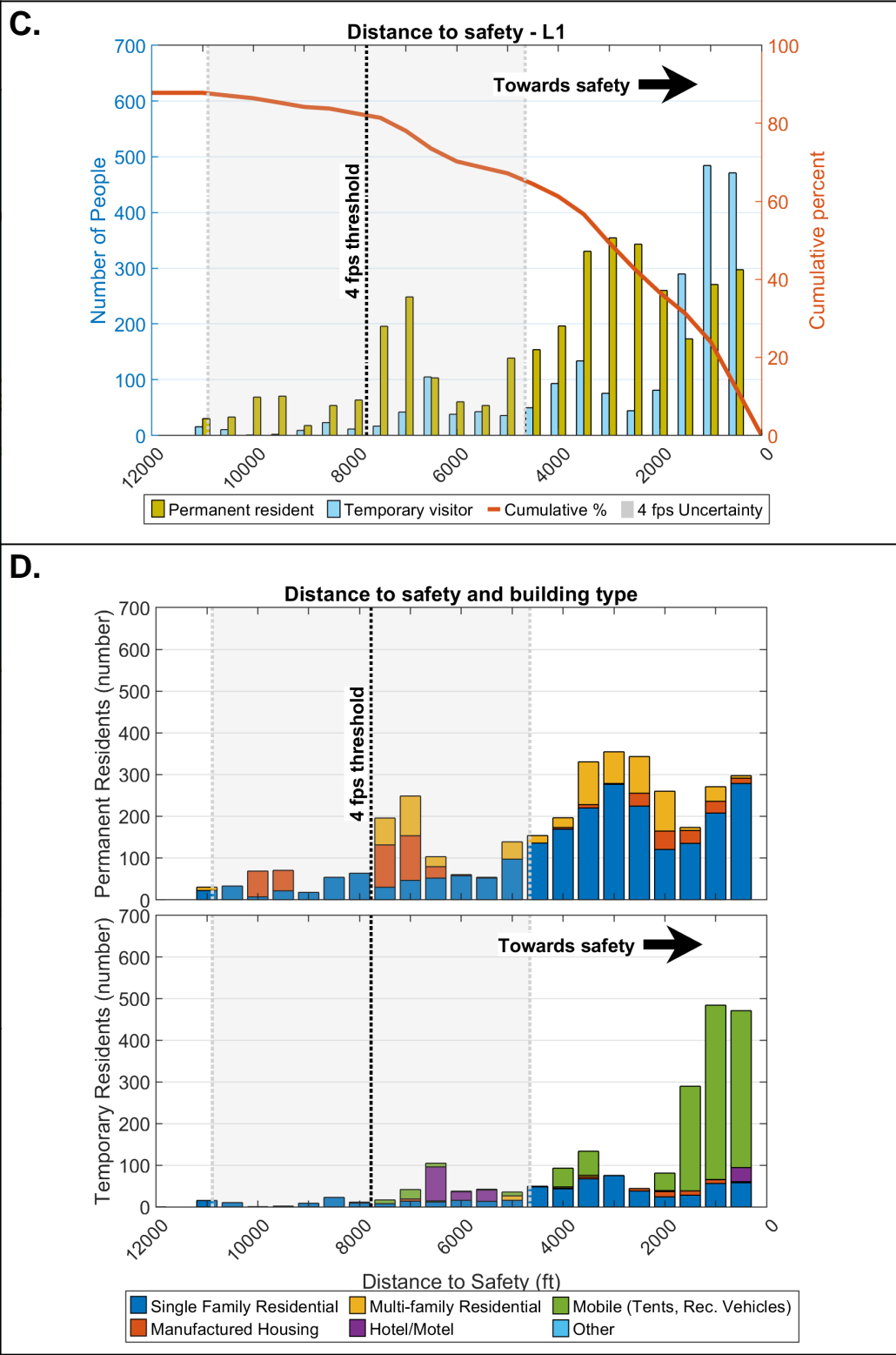
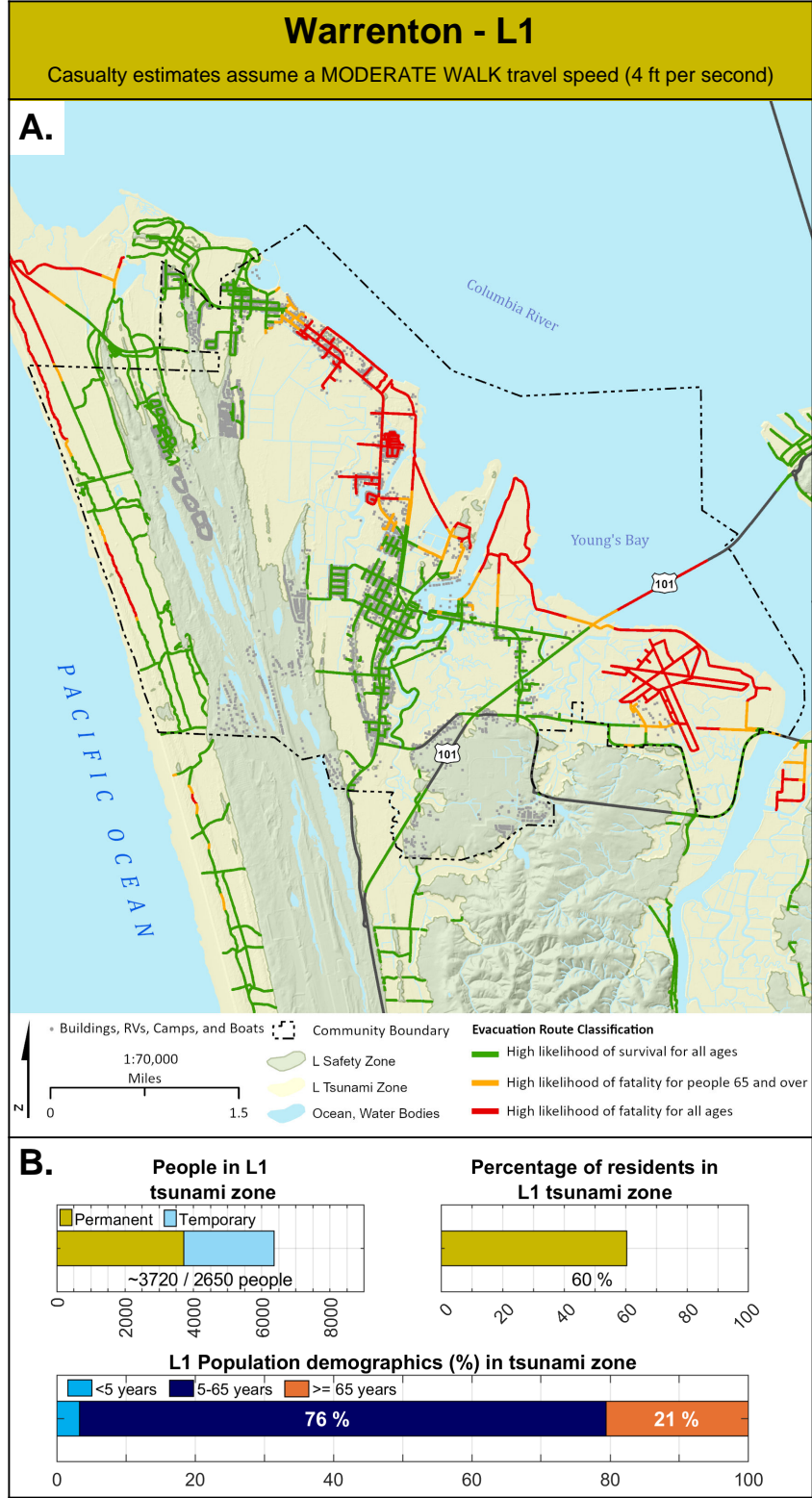
E.

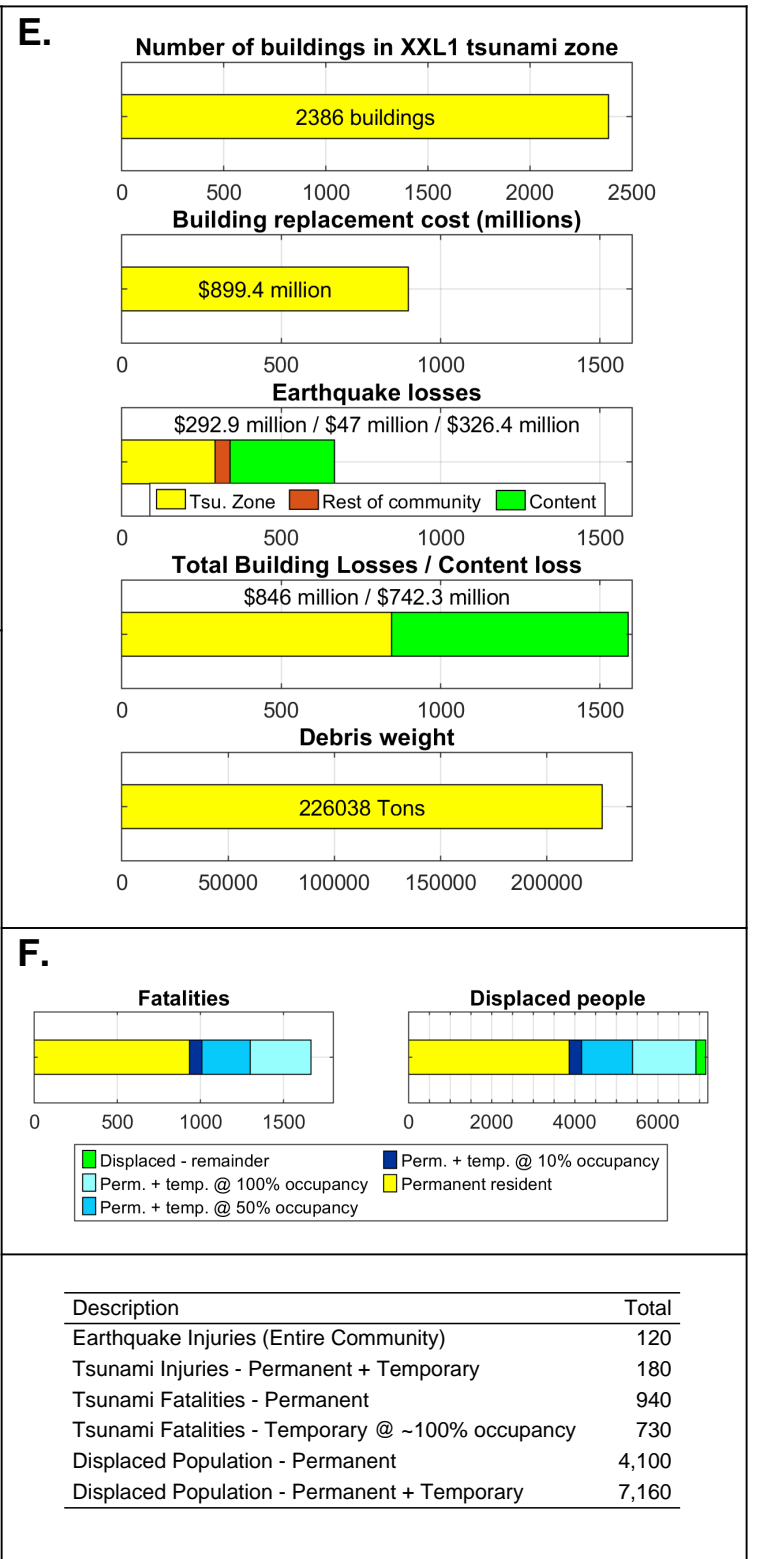
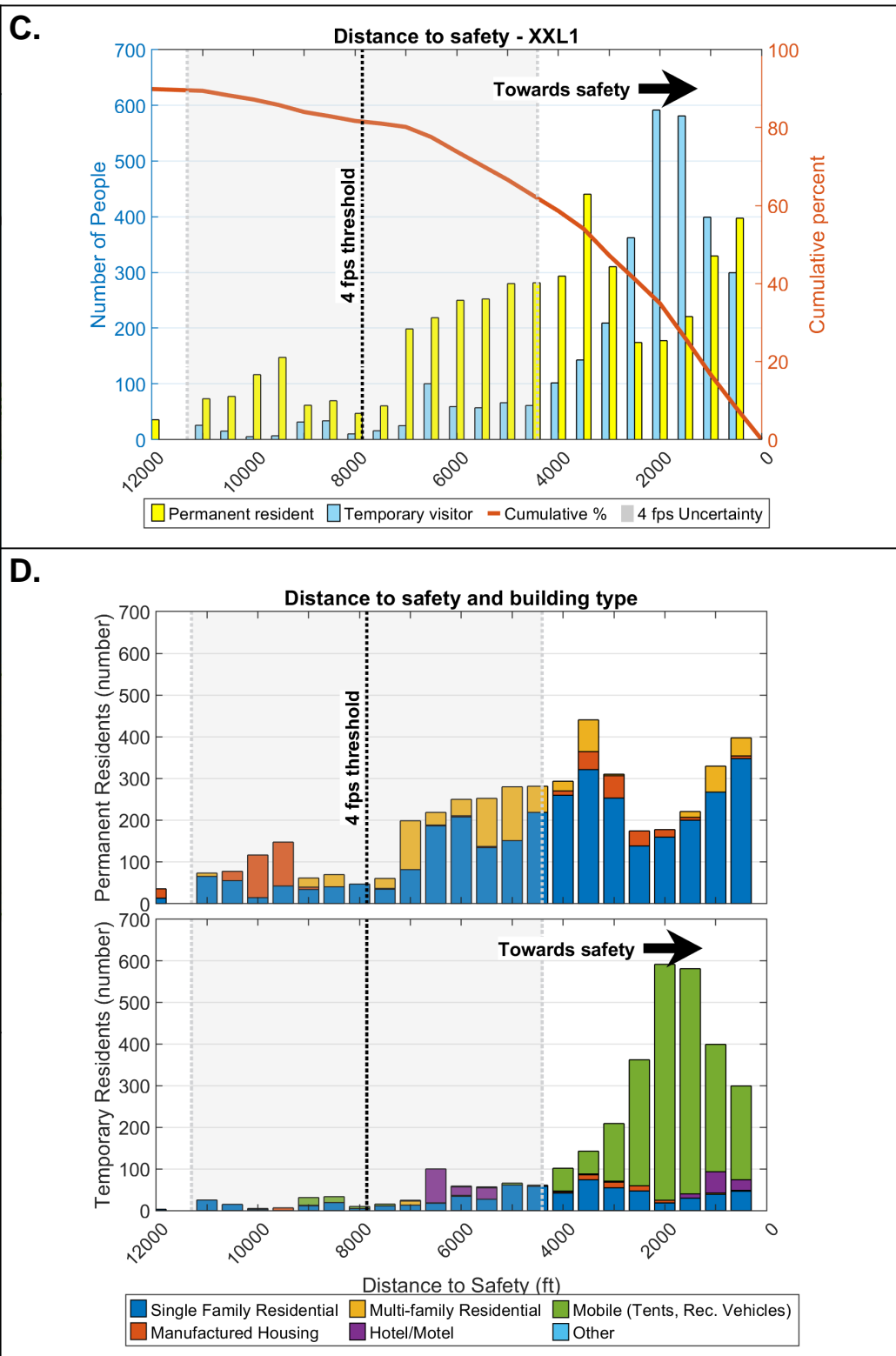
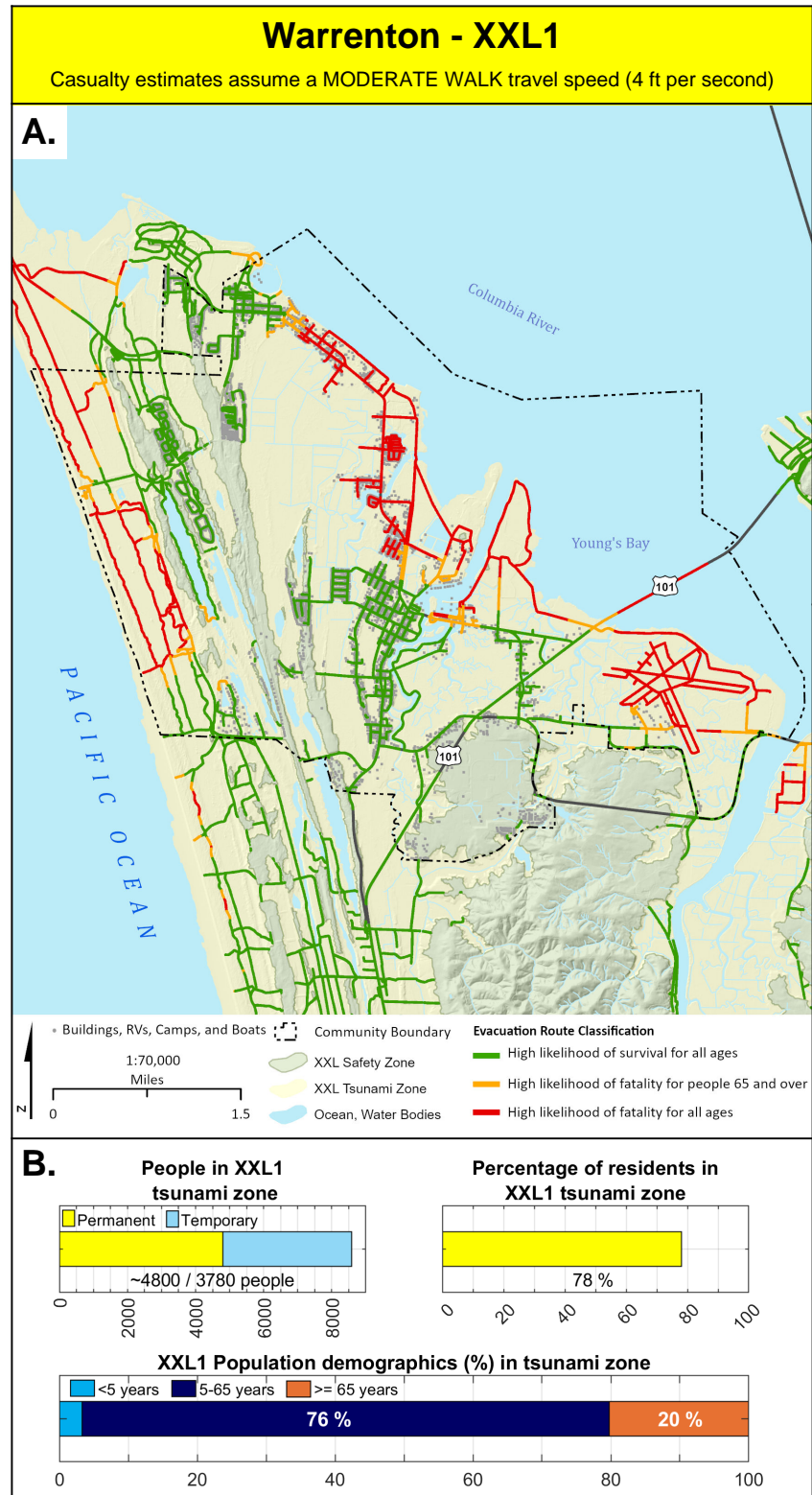


F.



Description	Total
Earthquake Injuries (Entire Community)	120
Tsunami Injuries - Permanent + Temporary	570
Tsunami Fatalities - Permanent	250
Tsunami Fatalities - Temporary @ ~100% occupancy	320
Displaced Population - Permanent	3,250
Displaced Population - Permanent + Temporary	4,540

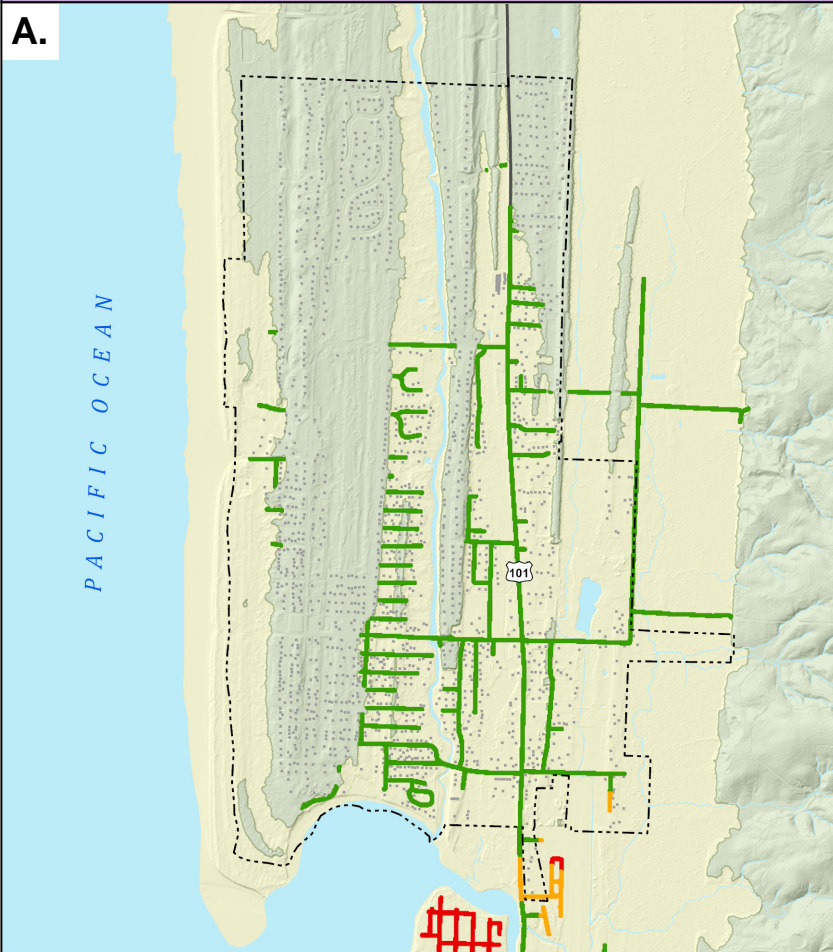




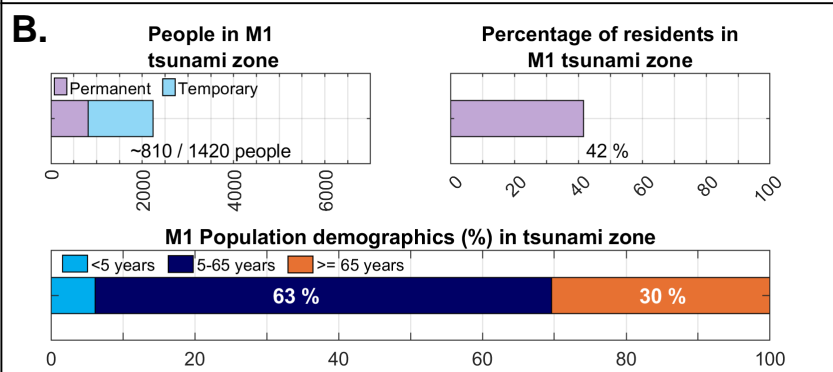
Gearhart - M1

Casualty estimates assume a MODERATE WALK travel speed (4 ft per second)

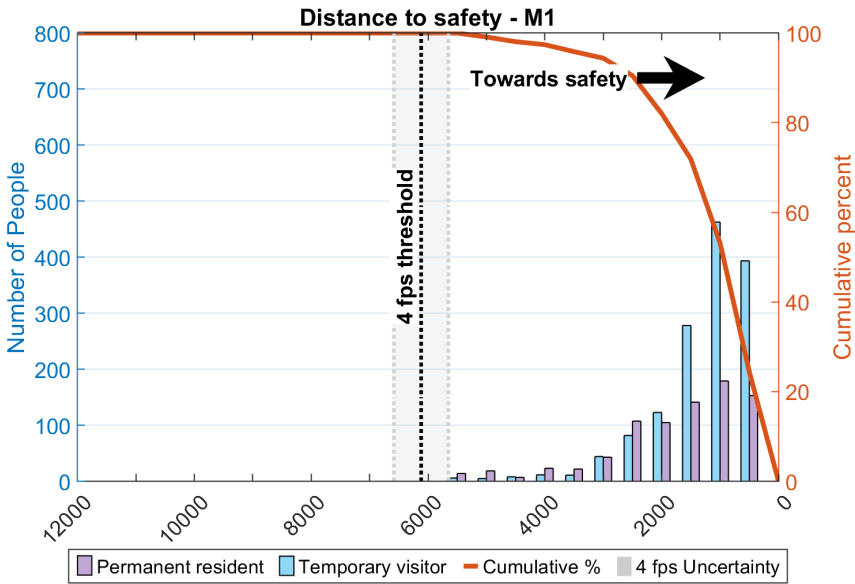
A.



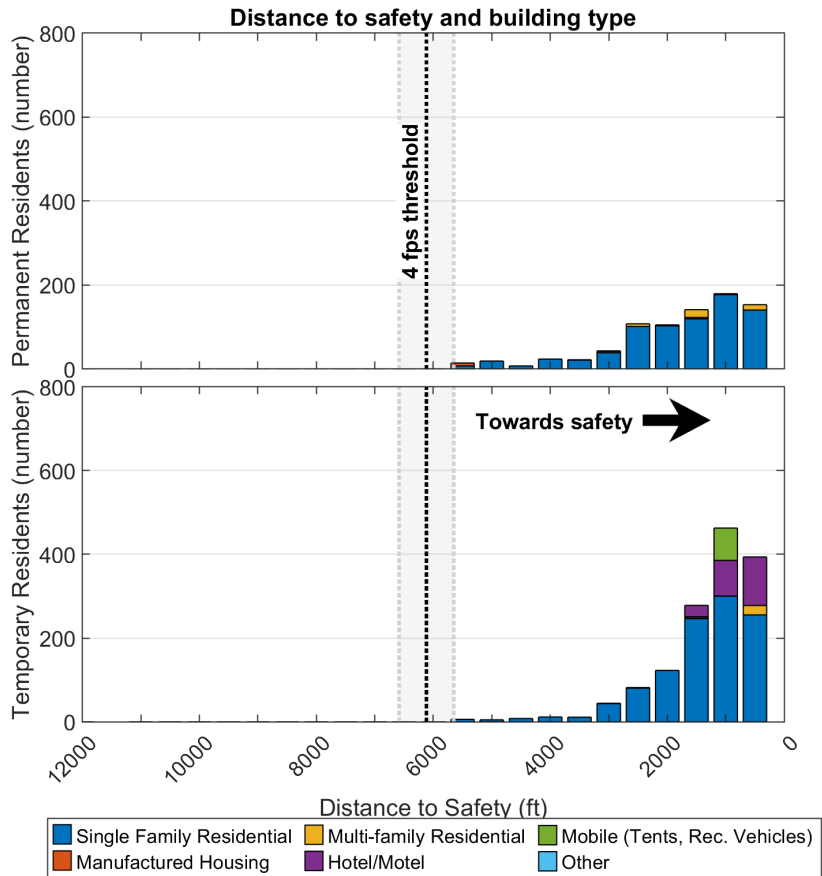
B.



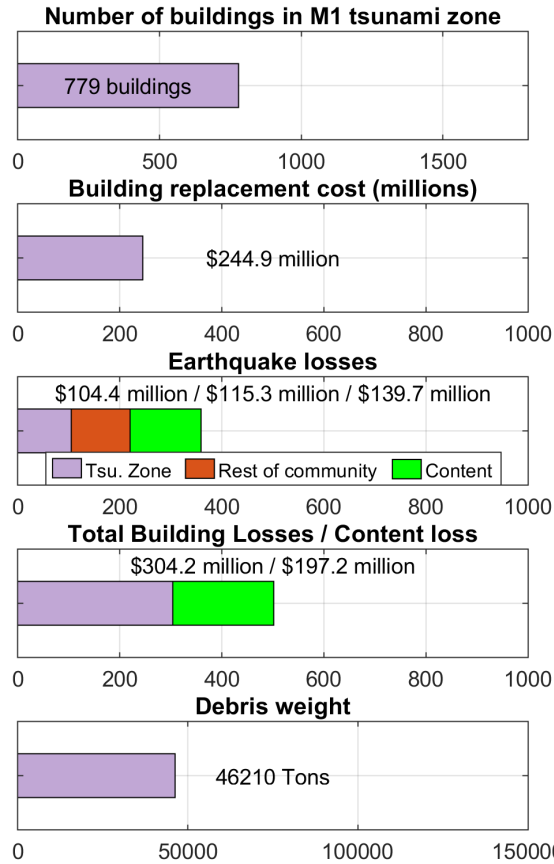
C.



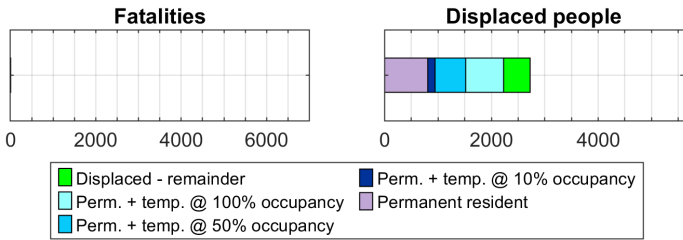
D.



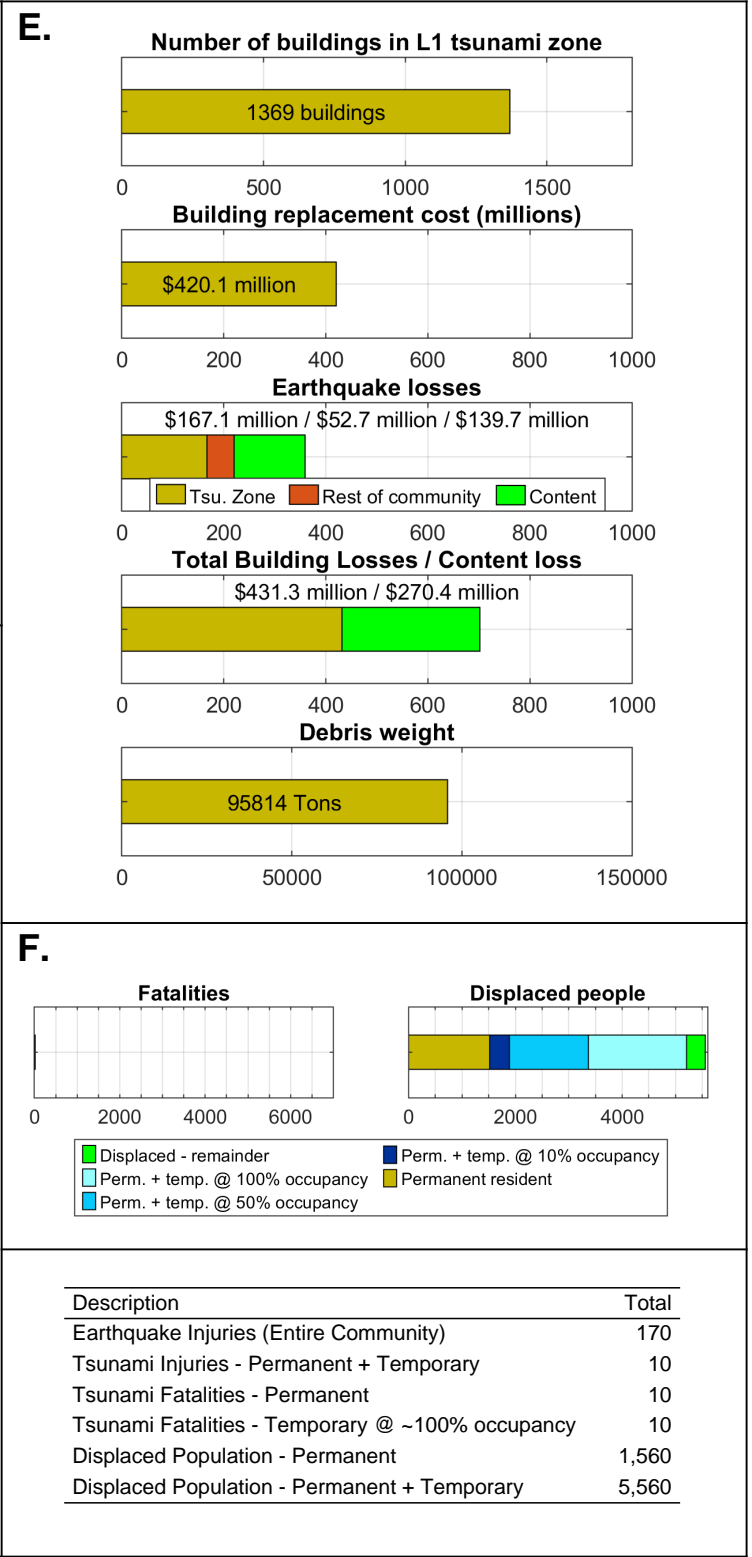
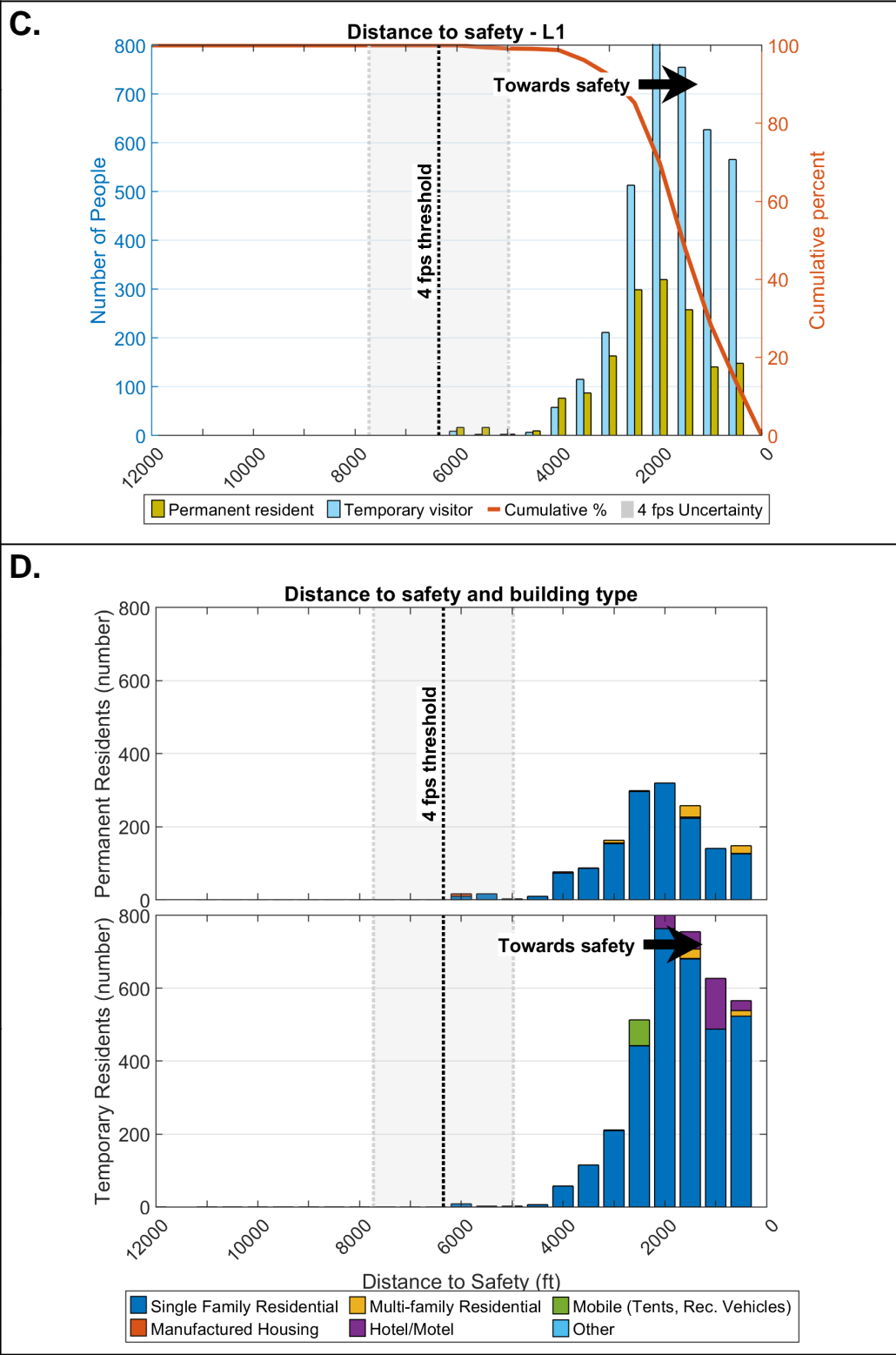
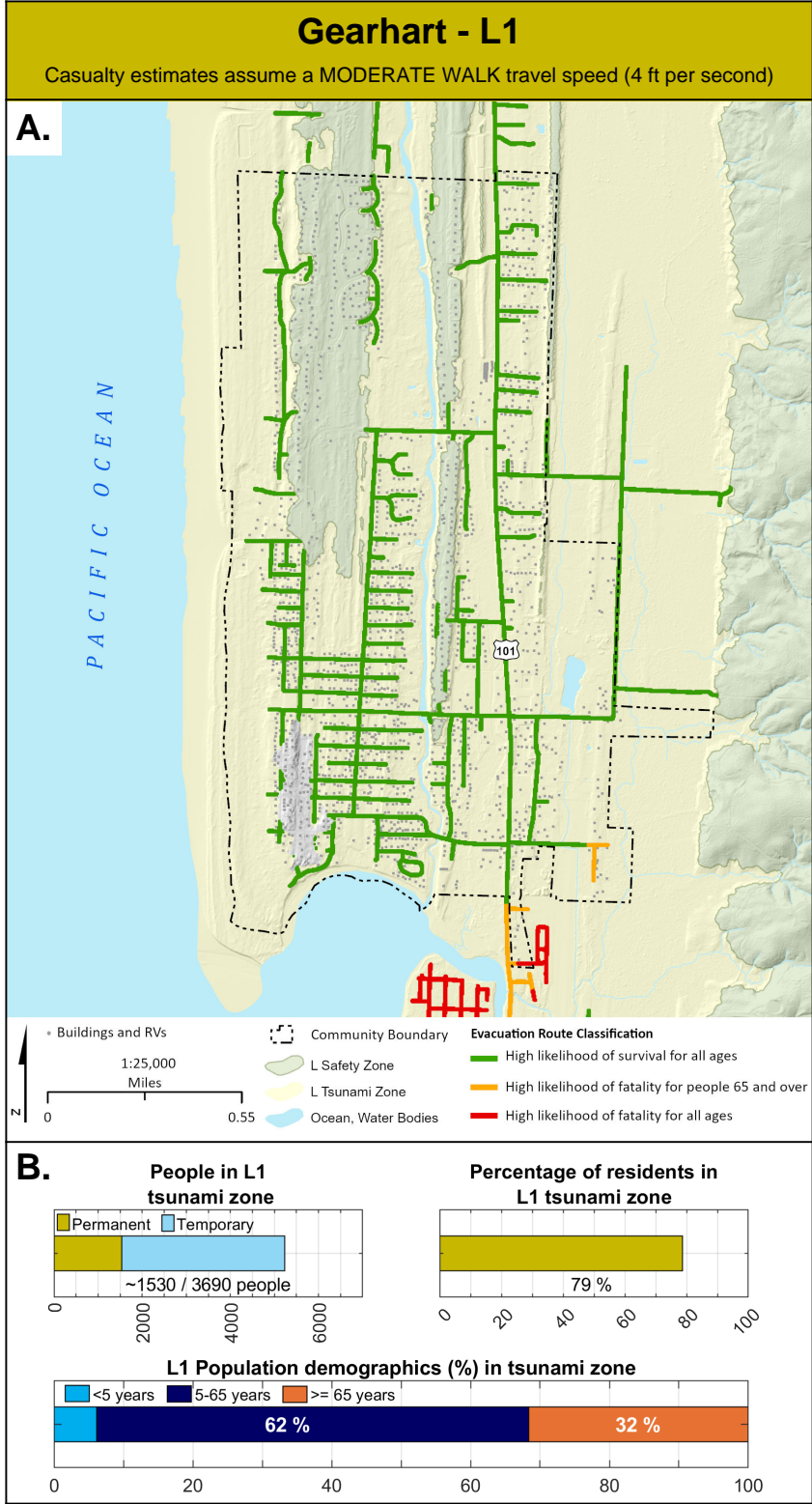
E.

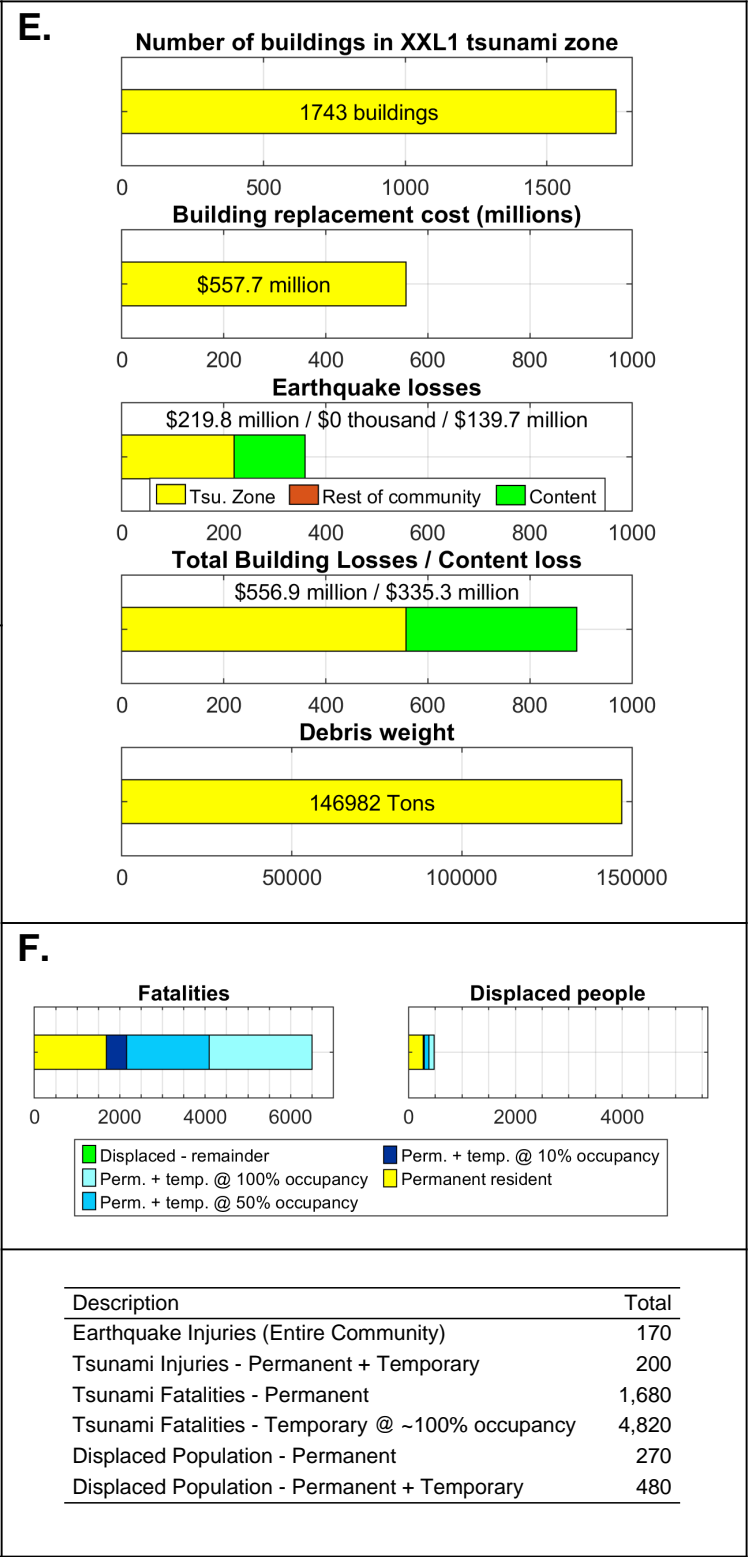
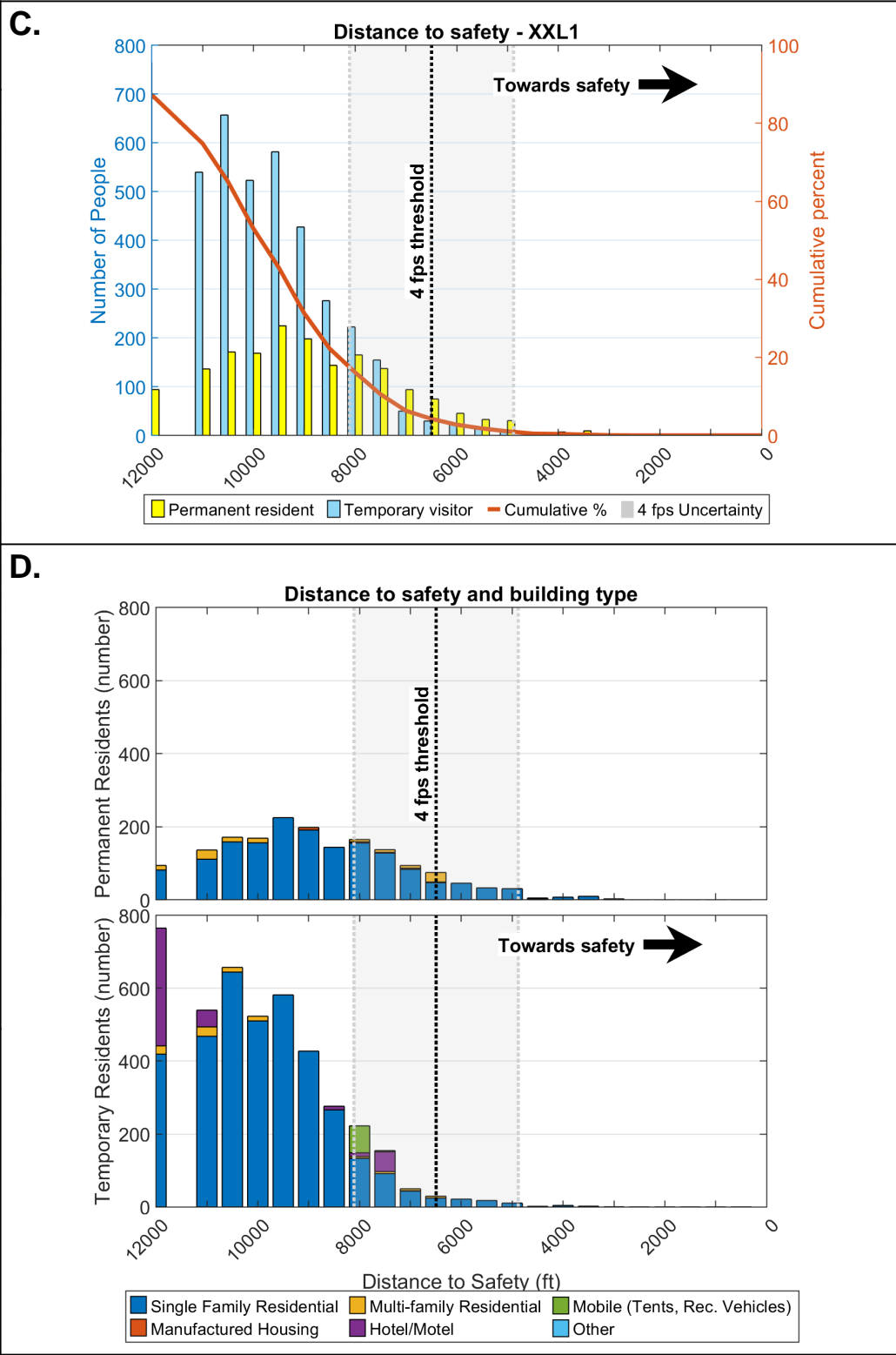
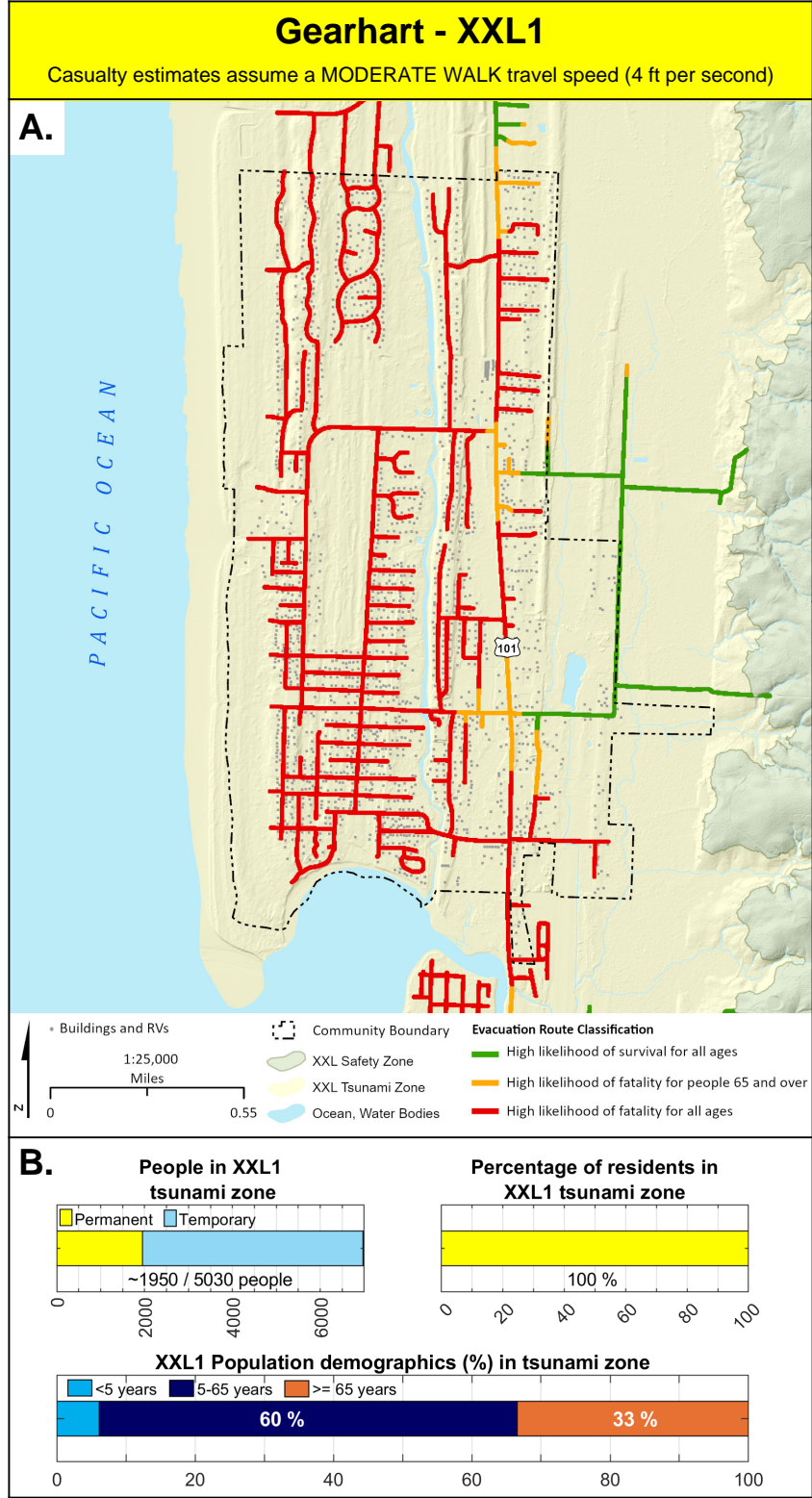


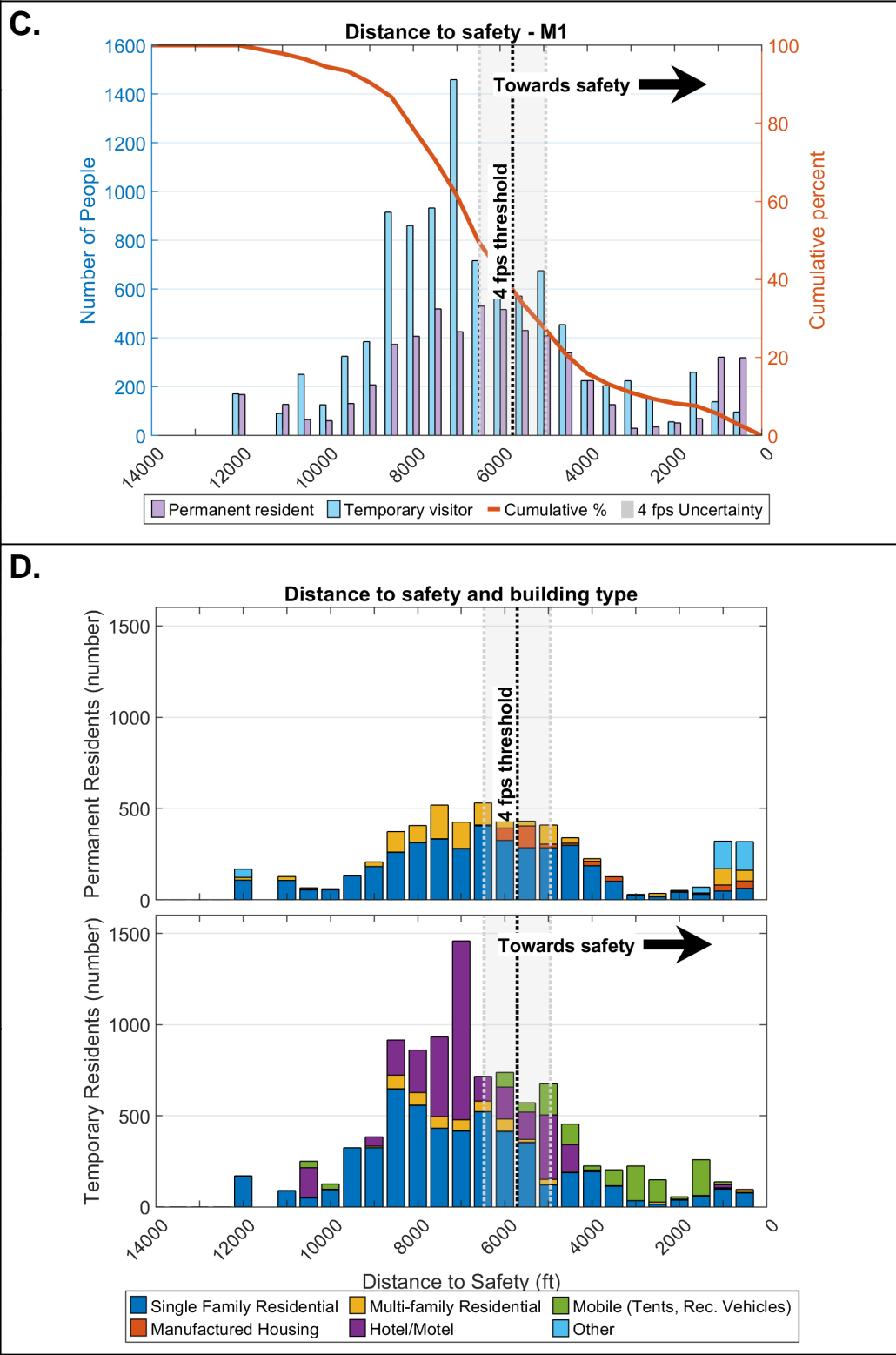
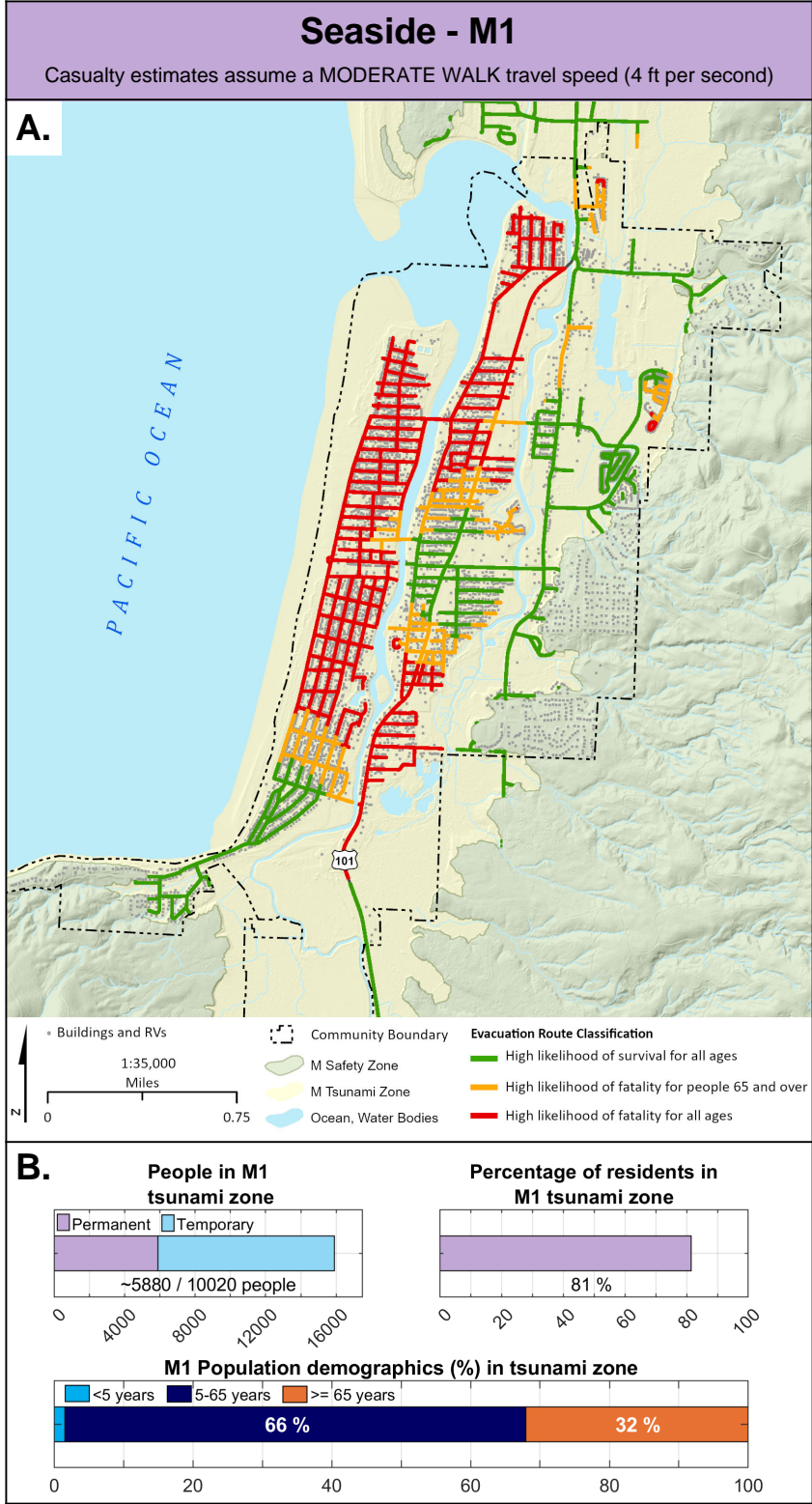
F.

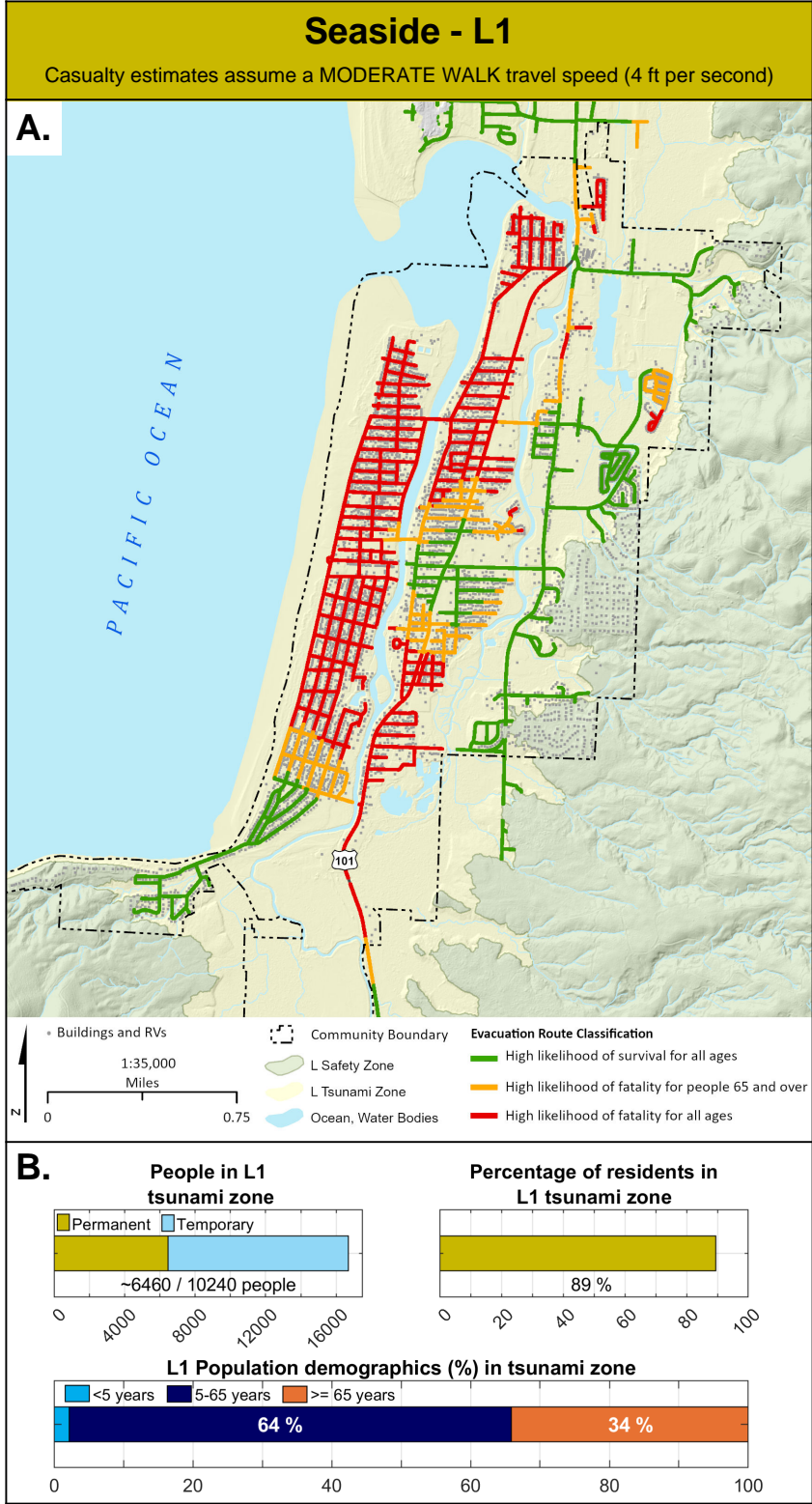


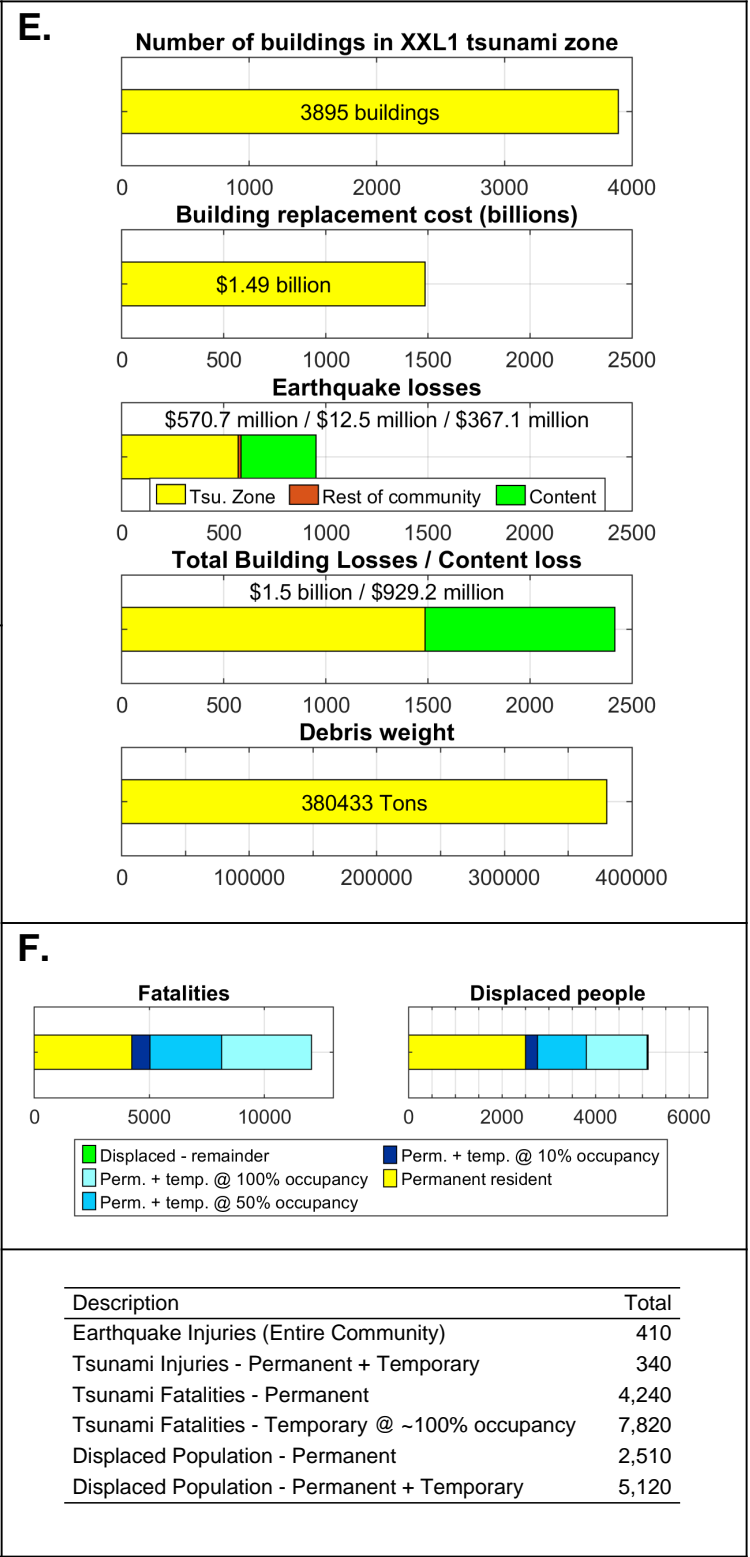
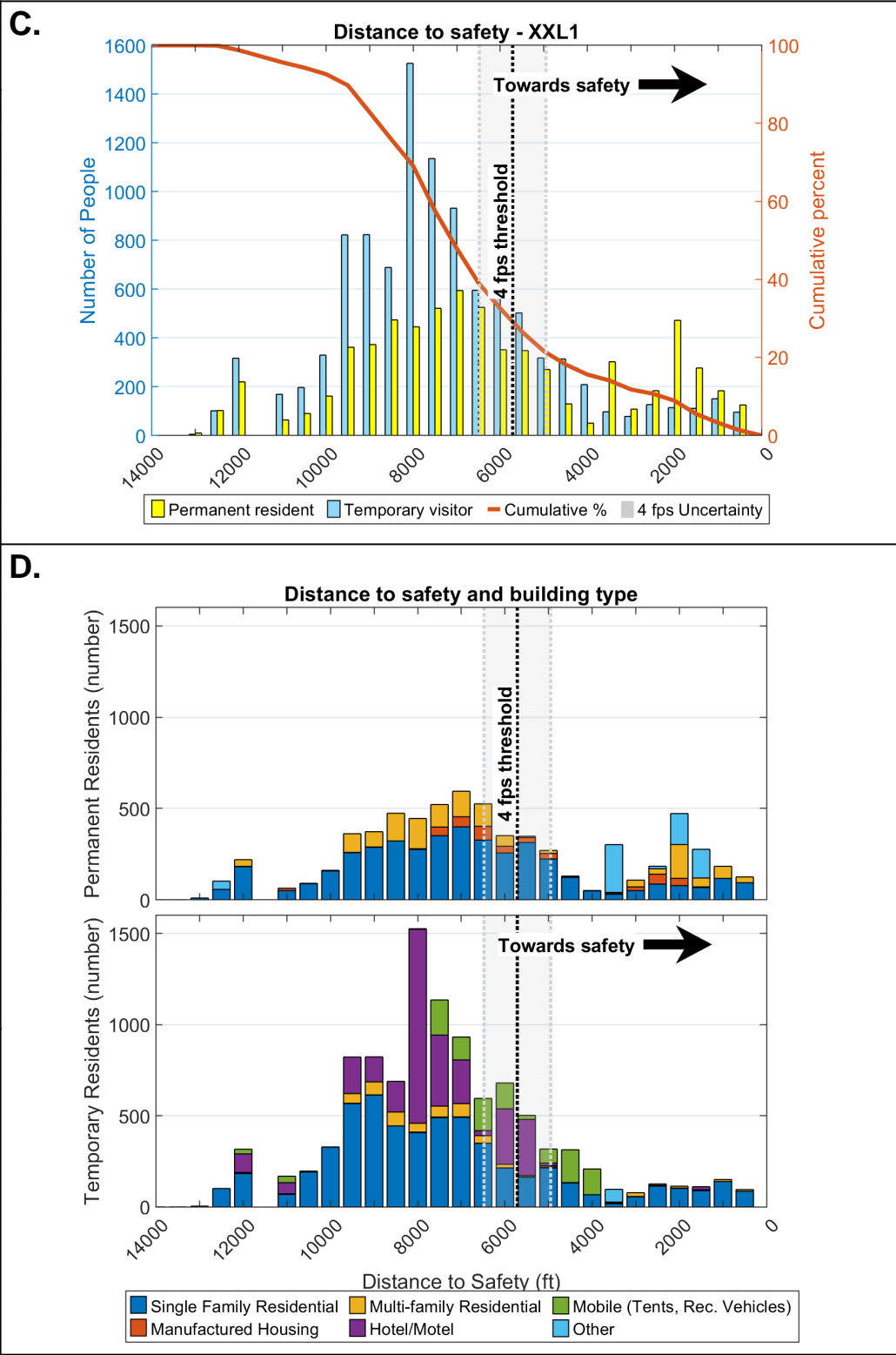
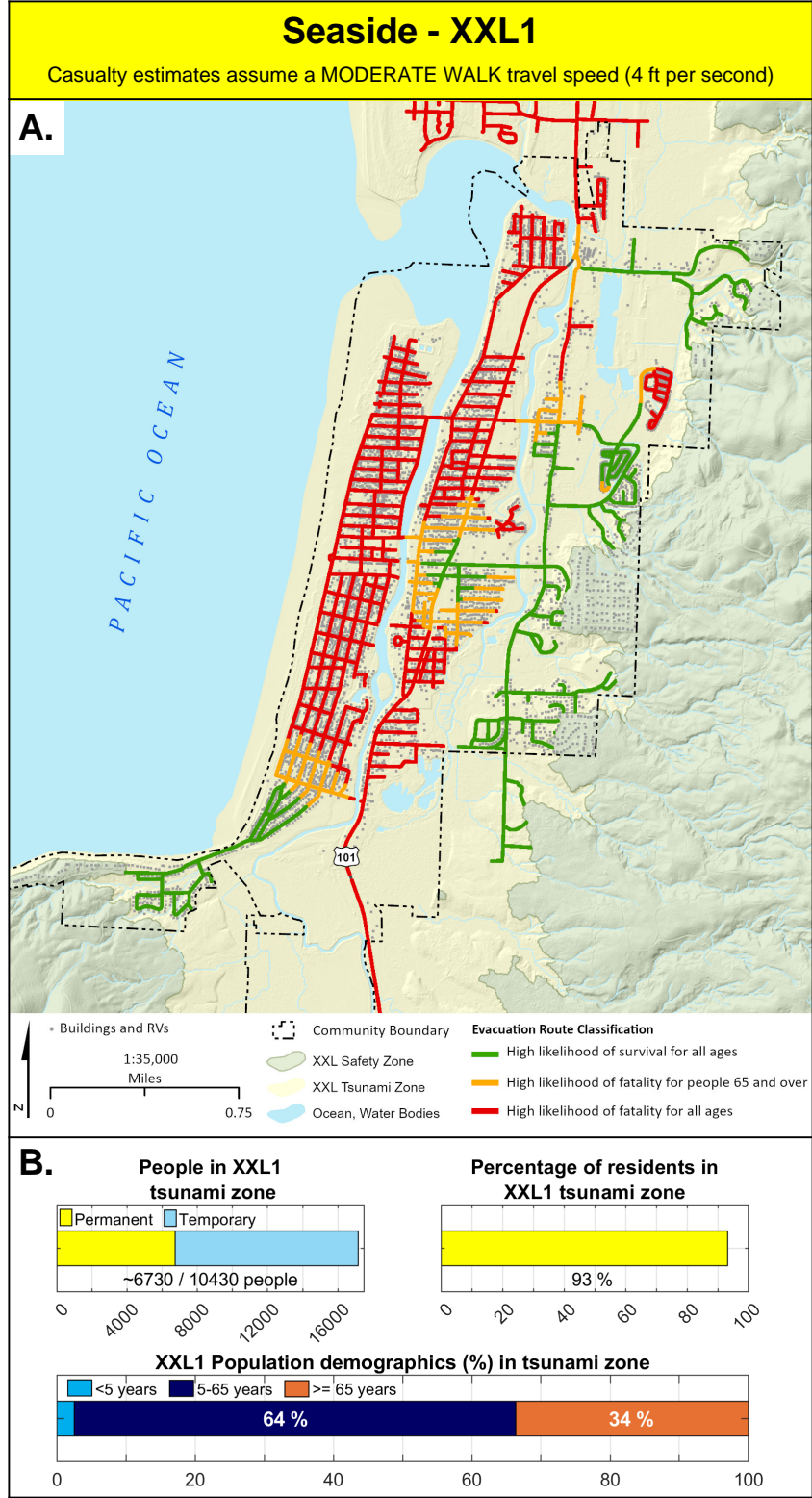
Description	Total
Earthquake Injuries (Entire Community)	170
Tsunami Injuries - Permanent + Temporary	10
Tsunami Fatalities - Permanent	0
Tsunami Fatalities - Temporary @ ~100% occupancy	0
Displaced Population - Permanent	870
Displaced Population - Permanent + Temporary	2,730







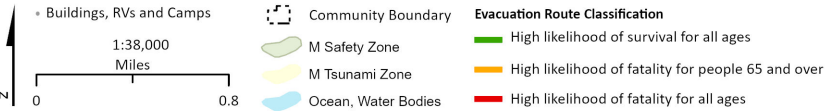
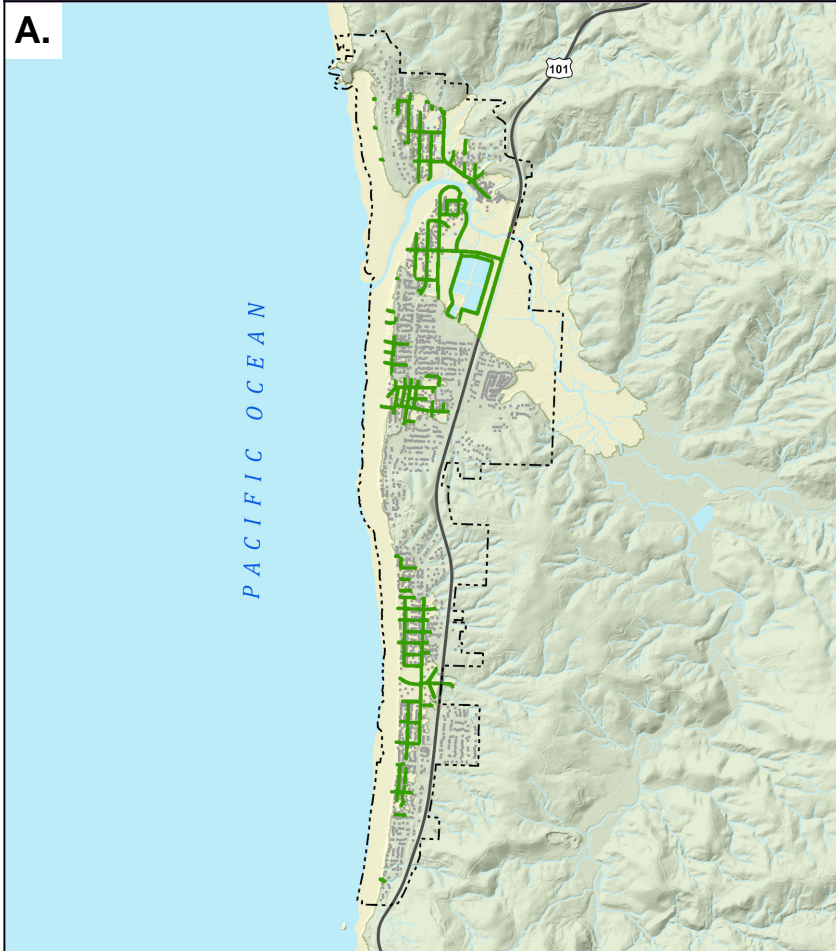




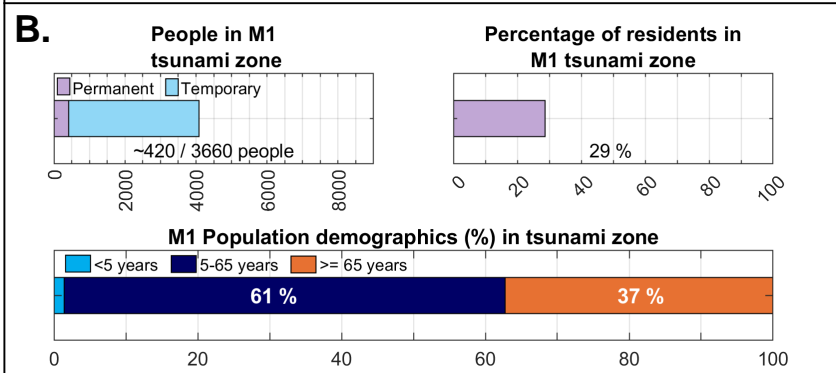
Cannon Beach - M1

Casualty estimates assume a MODERATE WALK travel speed (4 ft per second)

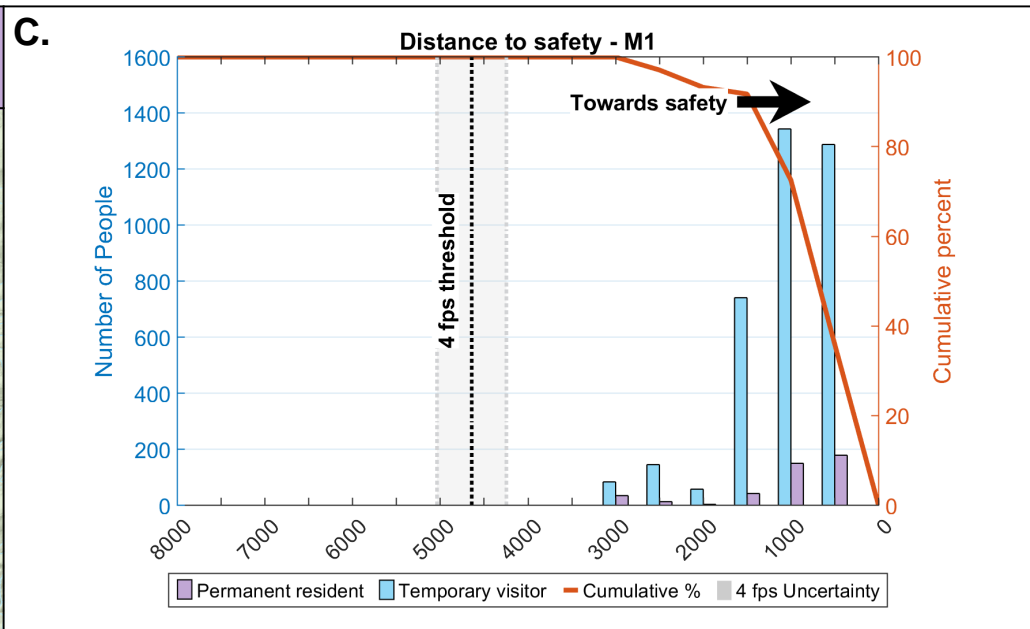
A.



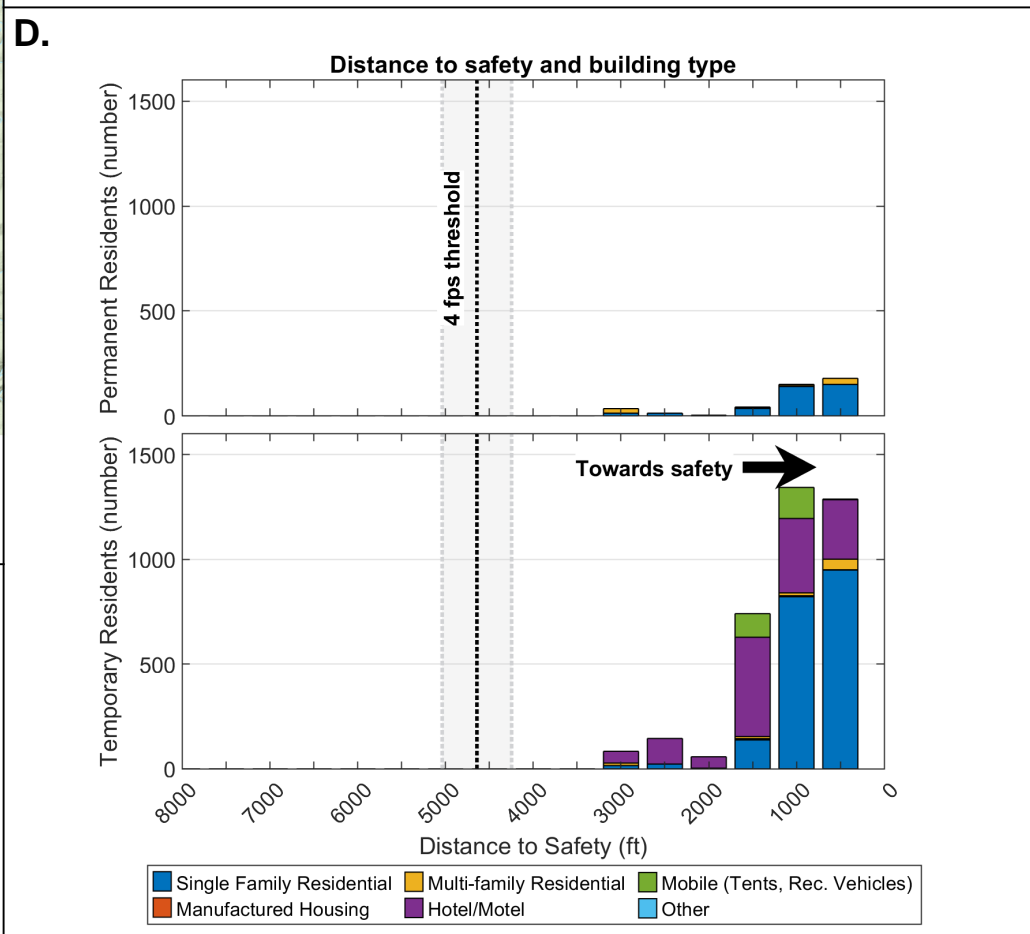
B.



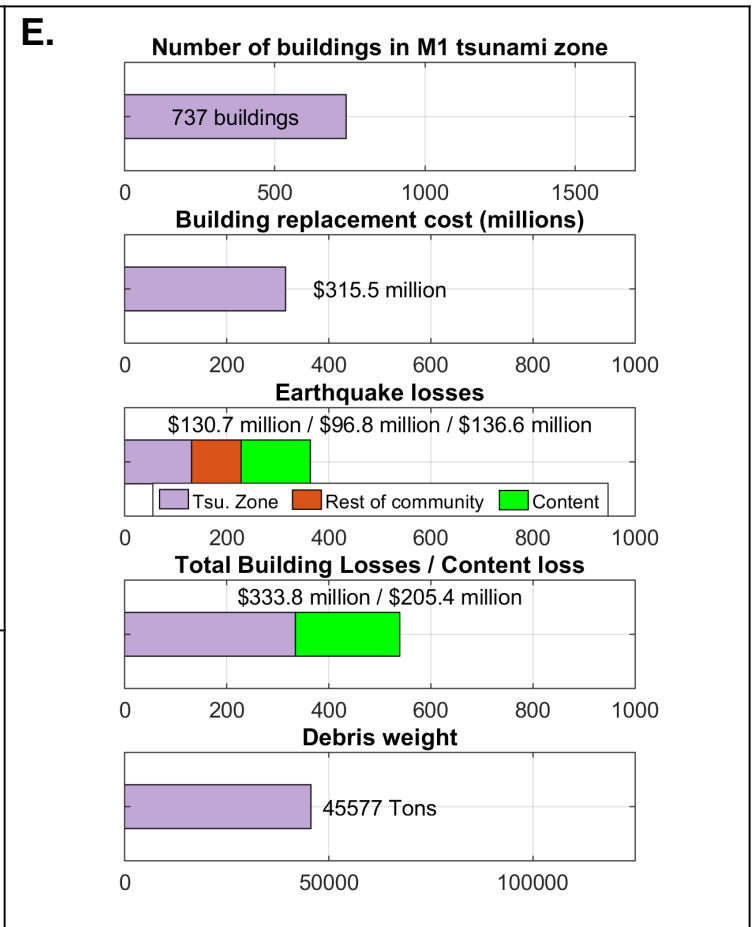
C.



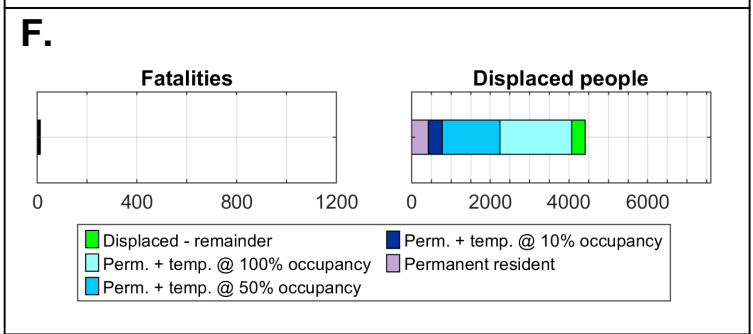
D.



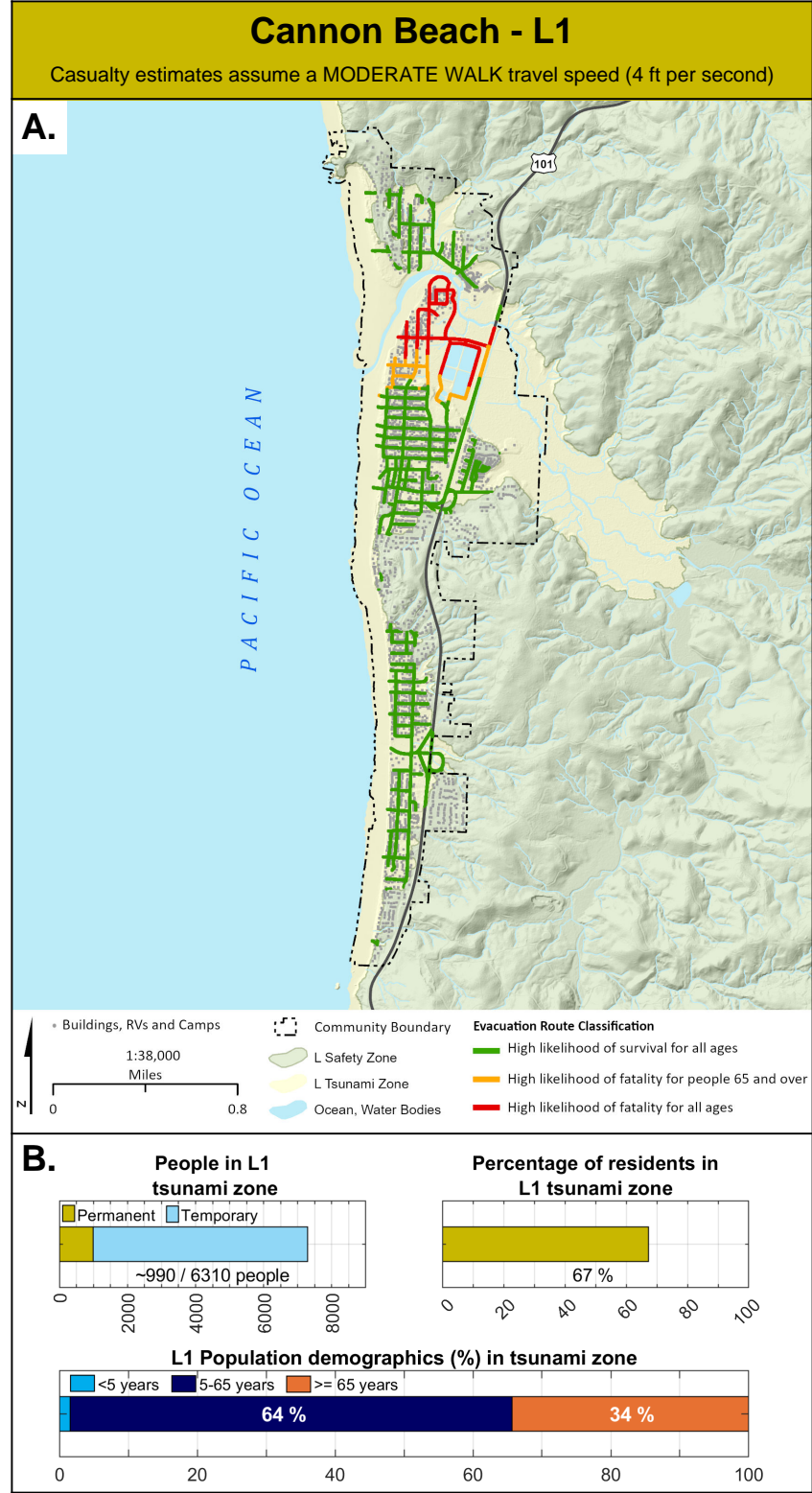
E.

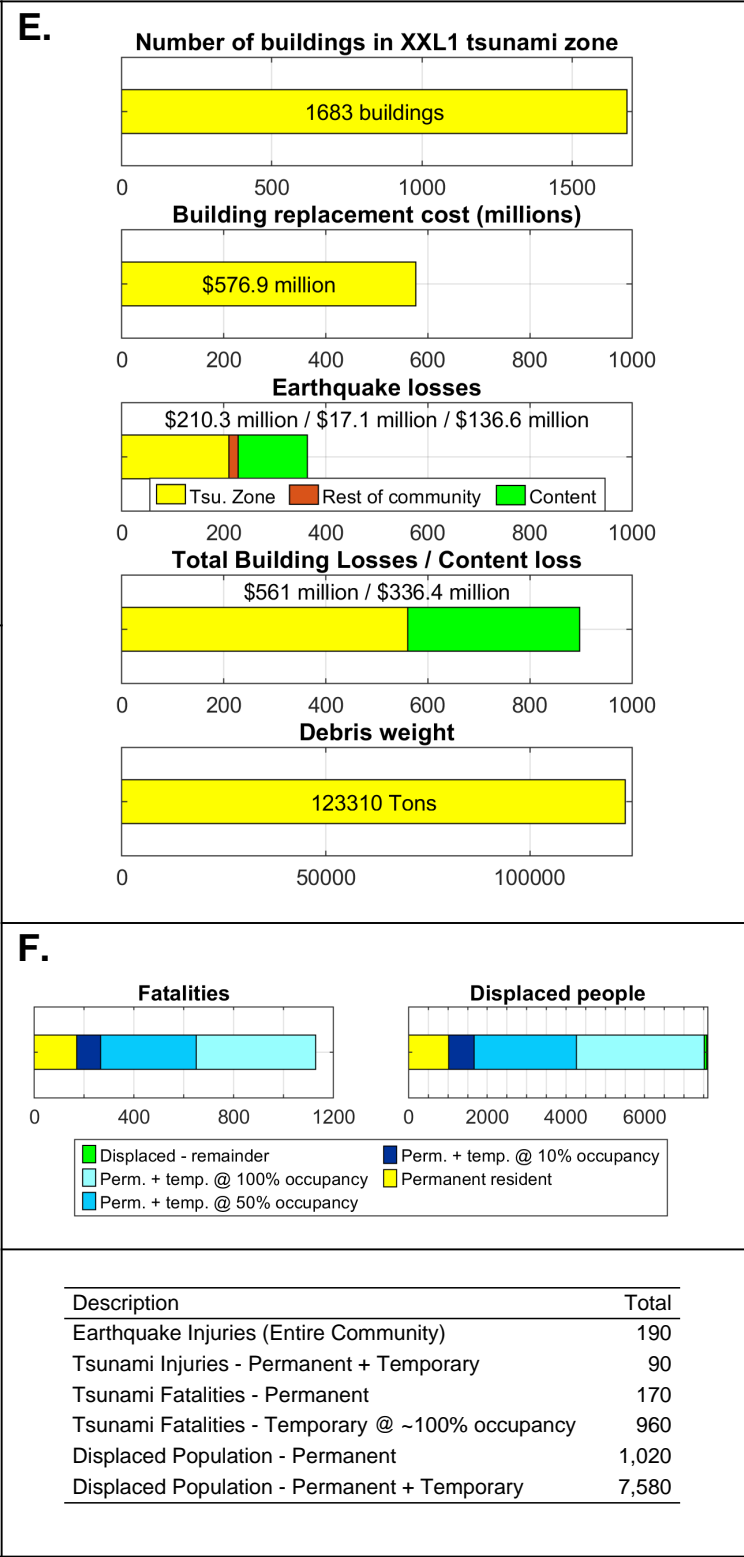
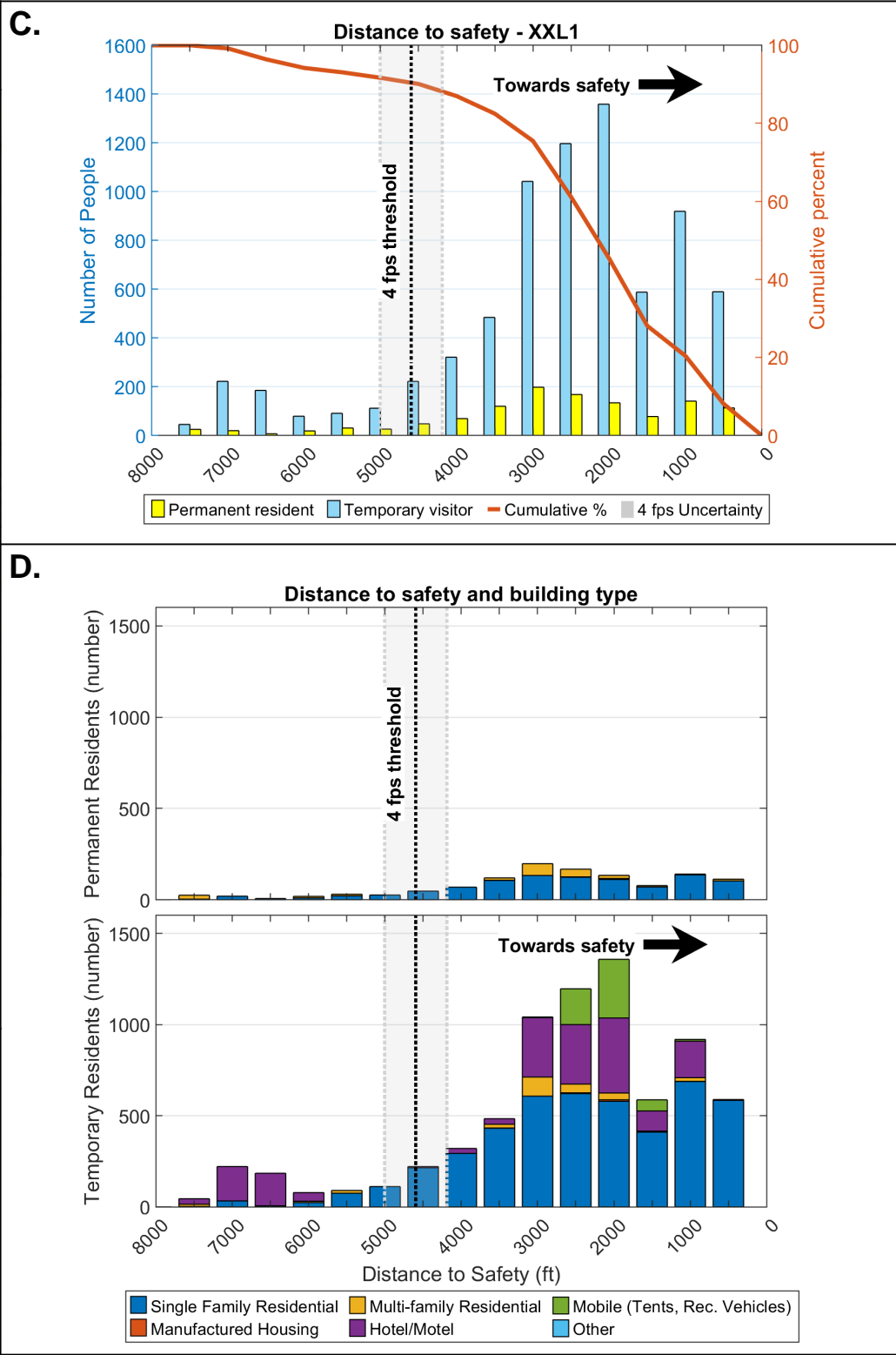
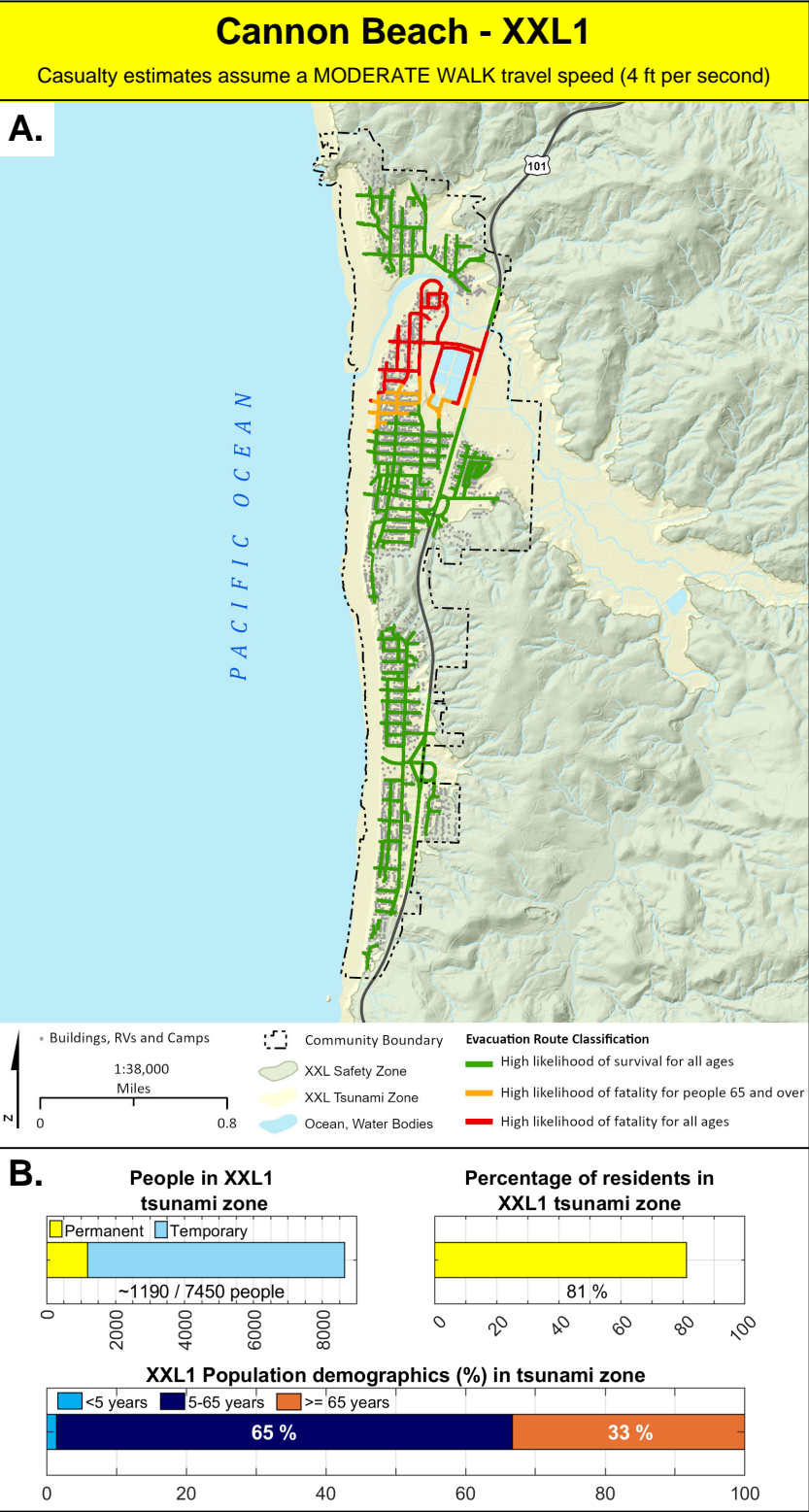


F.



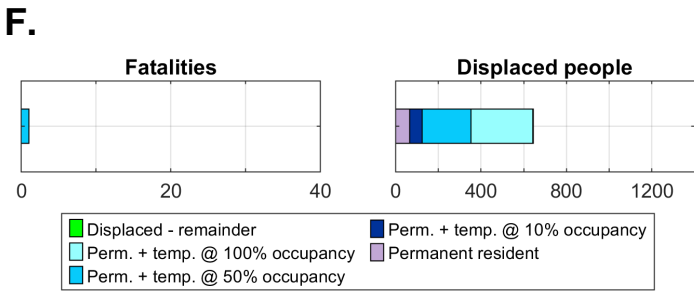
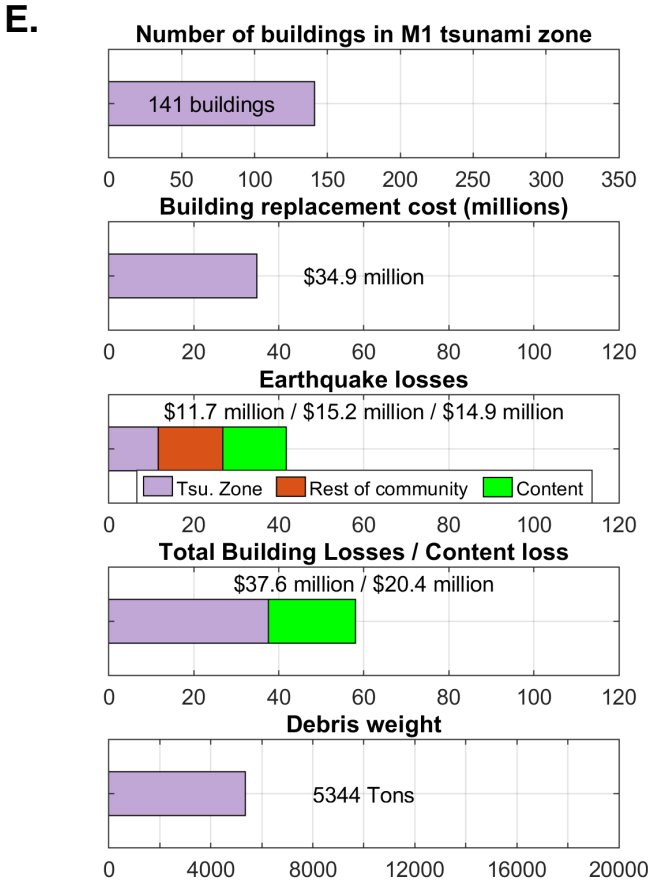
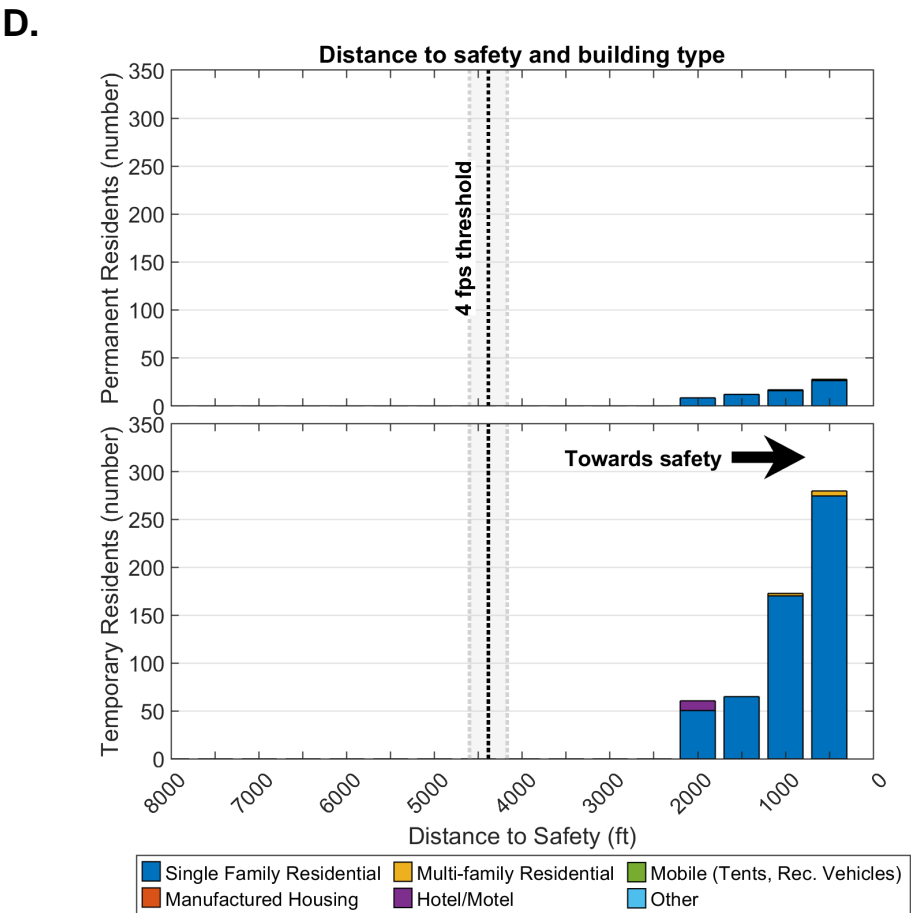
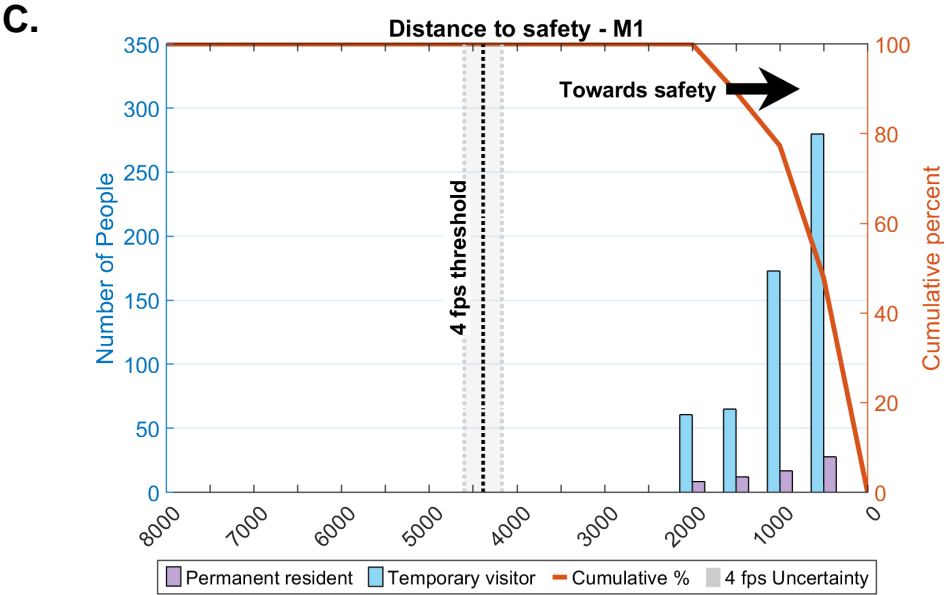
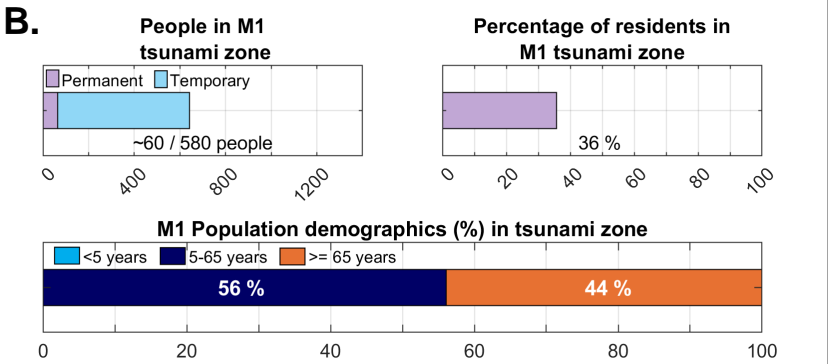
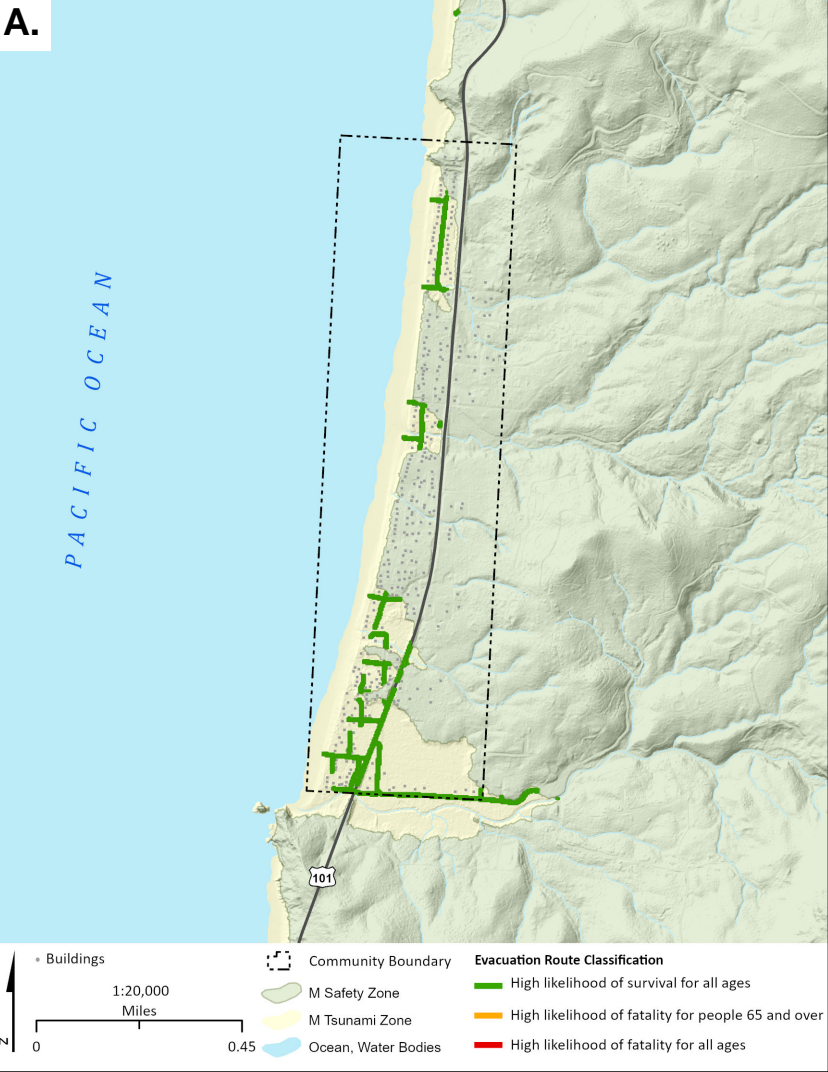
Description	Total
Earthquake Injuries (Entire Community)	190
Tsunami Injuries - Permanent + Temporary	0
Tsunami Fatalities - Permanent	0
Tsunami Fatalities - Temporary @ ~100% occupancy	10
Displaced Population - Permanent	490
Displaced Population - Permanent + Temporary	4,410





Arch Cape - M1

Casualty estimates assume a MODERATE WALK travel speed (4 ft per second)



Description	Total
Earthquake Injuries (Entire Community)	30
Tsunami Injuries - Permanent + Temporary	0
Tsunami Fatalities - Permanent	0
Tsunami Fatalities - Temporary @ ~100% occupancy	0
Displaced Population - Permanent	70
Displaced Population - Permanent + Temporary	650

